

United
Way



United Way of Laramie County

Our Vision:

NO ONE IN NEED

Our Mission:

A BETTER LARAMIE COUNTY

LIVE UNITED™

307.638.8904

LiveUnited@UnitedWayofLaramieCounty.org

1401 Airport Parkway, Suite 220
Cheyenne, WY 82003-7007

www.UnitedWayofLaramieCounty.org

Yearbook – Report to the Community

thank you for investing in your community!

2

0

1

0

Table of Contents

COVER AND CONTACT INFORMATION	COVER
UNITED WAY OF LARAMIE COUNTY TERMINOLOGY.....	PAGE 3
MESSAGE FROM 2010 BOARD OF DIRECTORS PRESIDENT.....	PAGE 4
2010 BOARD OF DIRECTORS	PAGE 5
MESSAGE FROM 2010 COMMUNITY INVESTMENT TEAM’S CHAIR.....	PAGE 6
COMMUNITY INVESTMENT TEAMS AND VOLUNTEERS	PAGE 6-7
SERVICES AND PROGRAMS PROVIDED TO THE COMMUNITY	
SAFETY NET AND CORE SERVICES	PAGE 8
PREVENTION AND DEVELOPMENT.....	PAGE 9
PARTNERSHIPS AND INITIATIVES	PAGE 10-11
FUNDING ALLOCATION PROCESS AND CIT TRIANGLE.....	PAGE 12-13
MORE VOLUNTEERS	
2010 CAMPAIGN CO-CHAIRS.....	PAGE 14
MARKETING COMMITTEE, TEAM CAPTAINS AND LOANED EXECUTIVES.....	PAGE 15
PACESETTER LOANED EXECUTIVES AND SPEAKERS BUREAU	PAGE 15
WOMEN’S LEADERSHIP COUNCIL STEERING COMMITTEE	PAGE 16
CAMPAIGN MEDIA PARTNERS	
UNDERWRITING AND MEDIA CIRCLES, ADDITIONAL PROMOTIONAL SUPPORT.....	PAGE 11-12
ANNUAL CORPORATE SPONSORS.....	PAGE 17-19
CAR VOUCHER GIVEAWAY PROGRAM	PAGE 20
2010 UNITING OUR COMMUNITY AWARD	PAGE 21
2010 SPECIAL EVENTS AND PROMOTIONS.....	PAGE 22-23
DONORS—BUSINESSES AND INDIVIDUALS	
BUSINESS PARTNERS AND EMPLOYEE CAMPAIGNS.....	PAGE 24-29
INDIVIDUALS DONORS, WOMEN’S LEADERSHIP COUNCIL.....	PAGE 30-37
DONORS—GOVERNMENT CAMPAIGNS	
GOVERNMENT EMPLOYEE CAMPAIGNS	PAGE 38-41
MAKING THE CASE FOR ACCOUNTABILITY	PAGE 42-43
MESSAGE FROM EXECUTIVE DIRECTOR, UWLC STAFF	PAGE 44

*“We make a living by what we get,
but we make a life by what we give.”
—Winston Churchill*

United Way of Laramie County Terminology

Accountability: Liable to being called to account; answerable, responsible. That can be explained, reliable or dependable, as in meeting debts, conducting business dealings, etc. answerable to or serving with discretion

Agency: An organization, company, or bureau that provides some service for another; a company having a franchise to represent another, a governmental bureau, or an office that it represents.

Allocate: To spread a single monetary amount over a specific time period.

Campaign: An annual fund-raising effort, continuing to meet the basic human service needs of the Laramie County community. Working together with volunteers to Advance the Common Good.

Charity: Generous actions or donations to aid the poor, ill, or helpless.

Collaboration: To work together with others, especially in a joint intellectual effort.

Community Impact: The effect or influence of goals predetermined from the ideas and concepts created by Community Investment Teams.

Community Investment Teams (CIT): Volunteers from across the community who are experts in the fields of finance, health, education, law, government, human services and business.

CIT Triangle: 1) Safety Net and Core Services, 2) Prevention and Development, 3) Initiatives and Collaborations.

Corporate Sponsorships: Each campaign year United Way of Laramie County receives support from generous local businesses to cover the cost of events and a variety of campaign expenses. No campaign funds are spent on our events.

Designation of gift: An option offered to all donors who would like to have their gift go to a specific agency or program partner.

Donor: A person or business that gives in a charitable manner.

Funding: A sum of money or other resources set aside for a specific purpose.

Grant: Approved funds transferred formally.

Human Service Needs: The basic essentials to survive; food, clothing, shelter, health care, financial stability.

Non-profit: Not established for the purpose of making a profit; not entered into for money.

Partnership: A relationship between individuals or groups that is characterized by mutual cooperation and responsibility, as for the achievement of a specified goal.

Program Partner: An agency that has been approved by CIT volunteers and the Board of Directors to receive a grant during a two-year funding cycle. The agency has entered into a contract to facilitate a program which will serve basic human needs in Laramie County.

Program: A business plan to produce meaningful and measurable results to achieve long-term outcomes in Laramie County.

Invitation for Proposal (IFP): A request for a full proposal from a local agency that will outline how the program will help the Community Investment Team's objectives and target issues to achieve the following long-term outcomes for Laramie County.

Uniting our Community Award and Circle of Stars: The award is presented to a person or business donor that excelled and has shown a very strong commitment during the current year's campaign. The Circle of Stars are runner-ups for this award.

United Way of Laramie County:

Advancing the Common Good—

Chris McRady

President, 2010 Board of Directors

How truly blessed we are to live in Laramie County! Not only is this area one of the least affected by the latest economic downturn, the generosity and community spirit of our fellow citizens is second to none. This carries thru from our contributors to our sponsors and from our volunteers to our program partners and staff. Our contributors are committed to providing United Way with the funding necessary to carry out our mission of “No One in Need”. Our sponsors have provided us with the resources necessary to market our Campaign and thank our contributors and volunteers. Countless hours are expended by our volunteers, staff and Program partners to enable services to be provided to citizens of Laramie County. “Thank You” is not nearly sufficient to express my gratitude, but “Thank You” I do!

While Laramie County wasn't hit as hard as most areas of the Country, we were still affected. In late 2009, we learned of a \$5 million short fall in the 5th penny revenues. Because of the downturn in the economy, overall retail sales in Laramie County were down. Subsequently, the sales tax collection was down. This in turn could result in up to a 50% reduction in funding to United Way Program Partners. At the same time, our Program Partners were reporting an increase in the number of people needing these services. It was more vital than ever that we have a successful 2010 Campaign.

Tim and Kathy Joannides and Phil Noble and Lynn Birleffi agreed early on to chair the 2010 Campaign. Their passion for United Way along with their community connections and their competitive nature has made them the perfect fit for the position this year. The 2010 United Way Campaign was very successful in a very challenging year. Not only did they do a great job in 2010, they have committed to chairing the Campaign again in 2011. This has never been done before! Thank You, Thank You, Thank You!!

Early in February, United Way hosted a Community Forum. Two sessions were offered and were open to the public as well as applicants. The presentations included:

- Two-year Funding Cycle
- Grant Application
- Allocation Decisions

Those who attended, came away with a good understanding of the process and a new respect for the accountability that is now a part of that

process. A huge “Thank You” needs to go to Aimee Lewis and the Community Investment Teams for their continued commitment to keeping Program Partners accountable for the funding they receive from United Way.

The Wyoming 211 Board was organized and worked all thru 2010 to obtain the necessary funding for this very important service. Wyoming was one of only four states in the United States that did not have the service. Late in 2010, they were able to finally start operating.

United Way went “high tech” in 2010, with the set up of Facebook, Paypal and the Annual Yearbook all now online. This provided a new convenience to our current contributors and those wanting to know more about United Way.

In attempting to recap the happenings of 2010, I would be remiss if I failed to mention the loss of our dear friend Julie Hunter. Her short illness and eventual death was a shock to so many. Her zest for life and passion for helping and putting others before herself will keep her in our memories forever. The development of Julie's Closet, a non-profit formed to help professionally clothe those individuals who are entering the work force and cannot afford to purchase new clothes was a longtime dream of Julie's.

The United Way Board focused on a few internal goals this year. With the help of these dedicated individuals, we were able to re-write the Employee Handbook and complete new job descriptions. New By-Laws and the Code of Ethics were completed. A new emphasis was placed on the formation of an Endowment. In addition to the completion of these goals, new office space was also found for United Way. As the result of a very generous contribution, space was available and the move was completed in March, 2011. I truly appreciate all of the extra help that made these accomplishments possible. What a privilege to work with such a fantastic group of professionals!

Our devoted United Way staff was there every inch of the way. I can't begin to thank them enough for all they do. Their dedication and commitment to our Program Partners, contributors and volunteers is second to none. They keep us all on task and together, we ensure that in Laramie County there is “No one in Need”.

Chris McRady
President, 2010 Board of Directors

2010 Board of Directors United Way of Laramie County

President: Chris McRady

Secretary: Brenda Creel

Past President: Mike Williams

Treasurer: Janet Tilton

Vice President: Steve Lovas

Ted Adams. LCSD#1 Administration
 Matthew Ashby. City of Cheyenne, Planning Department
 Lyn Birleffi. Wyoming Associations and Government Affairs Network
 Michele Bolkovatz Warren Federal Credit Union
 Vicci Colgan. State of Wyoming Deputy Auditor
 Brenda Creel Bain Elementary School
 Gregory Dyekman Dray, Dyekman, Reed & Healey, P.C.
 David Faas. United States Air Force (Retired)
 Kathy Joannides. Halladay Motors
 Tim Joannides Halladay Motors
 Gregg D. Jones Jonah Bank of Wyoming
 Kevin Kisicki Wyoming Bank & Trust
 Col. Barry Kistler. F.E. Warren Air Force Base 90th Missile Wing
 Aimee Lewis University of Wyoming
 Steve Lovas. US Bank
 John E. Lynch. Federal Bureau of Investigation
 Julie Malm The Property Exchange
 Brandy Marrou McGee, Hearne & Paiz, LLP
 Chris McRady Wyoming State Bank
 Phil Noble Wyoming Associations and Government Affairs Network
 Gwen Perdue. Wachovia Securities
 Randall Reed. Dray, Dyekman, Reed & Healey, P.C.
 Susan Samuelson. Warren Livestock
 Steve Secrest Spradley-Barr Motors
 Julie Tiedeken McKellar, Tiedeken and Scoggin, LLC
 Janet Tilton Western States Learning Corp. (Align)



Front Row, left to right: Gregg Jones, Aimee Lewis, Kathy Joannides, Brenda Creel, Vicci Colgan, Lyn Birleffi, Brandy Marrou, Dave Faas.

Back Row, left to right: Executive Director Connie Sloan Cathcart, Mike Williams, Staff Debby Phillips, Kevin Kisicki, Tim Joannides, John Lynch, Matthew Ashby, Julie Tiedeken, Chris McRady, Steve Lovas, Greg Dyekman, Phil Noble, Steve Secrest, Randy Reed, Staff Sarah Napier, Staff Rod Hottle, Staff Amy Bennett, Janet Tilton.

Aimee Lewis

2010 Community Investment Team's Chair

2010 was a busy year for the Community Investment Teams (CIT). In addition to the continual process of reviewing team objectives and target issues, the CIT volunteers spent countless hours working on special projects addressing gaps in services in Laramie County identified during the 2009 proposal review process. The Improving Community Health team worked with Cheyenne Health and Wellness to improve health care access to uninsured, low-income residents in our community. The Helping Children & Youth Achieve Their Full Potential team held focus group sessions targeting parents, childcare providers and businesses in order to better define needs in the area of Early Childhood Education. The information gathered in these focus groups was used in the development of the Call for Partners for funding in 2012 and 2013 in hopes that partners will be engaged that can address the gaps recognized

by the focus groups.

I want to thank the CIT Chairs and team members for their commitment to the United Way and their willingness to go above and beyond in order to continually improve the Community Investment process, striving for better outcomes for Laramie County. It is the hard work and dedication of these teams that make the United Way's community-driven funding process possible.

Aimee Lewis
2010 Community
Investment Team Chair



Note: A few members of our Community Investment Teams work for some of our Program Partners. They attend meetings and participate with community outcomes discussion, but do not participate during any funding review meetings.

Helping Children & Youth Achieve Their Full Potential

2010 Community Investment Team Volunteers

Brandy Marrou, Chair.....	McGee, Hearne & Paiz, LLP
David Block.....	American Red Cross
Mary Brown.....	Airman & Family Readiness Center
Deanna Frey.....	Wyoming Children's Action Alliance
Lindi Kirkbride.....	
Phil McGovern.....	Cheyenne Family YMCA
Sheila Ricley.....	Wyoming Children's Action Alliance
Susan Samuelson.....	Warren Ranch
Susan Schultz.....	
Ann Secrest.....	
Julie Tiedeken.....	McKellar, Tiedeken & Scroggin

Promoting Financial Stability and Independence

2010 Community Investment Team Volunteers

Sam Runyan, Chair	DA Davidson
Sandra Adam	
Amanda Allard	Western States Learning Corporation (Align)
Sharon Benson	Meels On Wheels
David Block	American Red Cross
Kerri Blunn	Jonah Bank
Mary Brown	Airman & Family Readiness Center
Judi Johnston	Foster Grandparents
Rose Kor	Wyoming Kids
John Lynch	FBI
Sally Meeker	Special Friends
Tricia Murphy	KGWN TV
Lou Nagel	
Donna Neka	Climb Wyoming
Alan Quille	VA Medical Center
Jennifer Redding	Wealth Planning Investments
Ruth Rentzell-Williams	USAF Retired
Steve Secrest	Spradley-Barr Motors
Ami Skeens	Needs Inc.
Barbara Stafford	RMI
Nita Stephenson	Senior Companion
Carla Thurin	Safe House

Improving Community Health

2010 Community Investment Team Volunteers

Mike Dowling, Chair	US Bank
Dorothy Ailes	LSCD#1 Triumph High School
Tracy Brosins	CRMC
Antoinette Brown	
Terry Dimon	VA Medical Center
Dave Faas	
Bob Kanard	Retired Physician
Dr. Brad Kincheloe	Kincheloe Dental
Dr. Norton	
Physician	
Thomas Rudolph	Retired Rail Roader
Eric Weddell	Retired Physician
Lynne Weidel	Cheyenne Health and Wellness Center

Safety Net and Core Services

American Red Cross

Disaster Preparedness and Response: Provides disaster preparedness and response services to the citizens of Laramie County.

Cheyenne Health and Wellness Center

Dental Assistance program: Increases dental care access to Laramie County low-income residents.

Cheyenne Interfaith Hospitality Network (CIHN) / Family Promise

Homeless Family Shelter and Transitions: Offers homeless families with children economic respite while helping them regain independence and self-sufficiency.

Cheyenne Transit

Bus Tokens for Low-income Riders: To provide safe reliable public transportation to their members of our community and to promote their self sufficiency.

COMEA, Inc.

Basic Emergency Shelter & Transitional Living programs: Meets people's most basic needs of food, shelter and clothing. Builds upon the services offered by the emergency shelter and teaches clients to effectively maintain their health and safety, to make informed choices to manage their daily lives and enhance employability skills, and to invest in themselves and the community.

Consumer Credit Counseling Services

Financial Counseling program: Equips Cheyenne and Laramie County residents with financial skills so they can become financially self-sufficient and avoid or resolve financial crises.

Laramie County Community Partnership

Centralized Pharmacy: Provides a sustainable health care service by dispensing donated medications, utilizing "voucher" funds efficiently to purchase stock to fill in the common gaps of the donated medication inventory instead of vouchering all medications at full retail price, and administering the Cheyenne Regional Medical Center (CRMC) Prescription Assistance Program.

Meals on Wheels

Meals and Services to the Homebound and Seniors: Prevents early institutionalization of the elderly, disabled, ill convalescing, frail and other home bound persons of Laramie County. By the provision of services, helps people remain in their homes longer at a lesser cost, helps give them the right of choice and allows them to age in place.

NEEDS, Inc.

Crisis Food and Clothing Services: Identifies and provides services to help our neighbors in crisis access the most basic services —food, clothing, school supplies, and the means to celebrate with their families (children's birthdays and holidays) — and connects them to a continuum of additional support systems operating in Laramie County to meet their other needs.

Peak Wellness Center

Emergency Mental Health Services & Eastern Laramie County: Identifies people in Laramie County in crisis and intervenes in the critical situation so the risk is not life threatening and provides access to the kinds of services that will support stability, equilibrium and growth.

Safehouse Sexual Assault Services

Victim Advocacy program: Provides victims of domestic violence and sexual assault the right to reasonable protection and safety.

Prevention and Development

Boys and Girls Club of Cheyenne

Youth Development program: Helps youth reach their full potential through securing academic success, living a healthy lifestyle and distinguishing themselves as young community leaders

CASA of Laramie County

Court Appointed special Advocates for Children: Provides abused children (in crisis) with access to responsive and effective advocates who independently investigate and facilitate human service interventions that enhance children's health and safety. Provide a court-appointed volunteer voice for abused and neglected children thereby advocating a safe and permanent environment in the community for children to grow and develop into stable adults.

CLIMB Wyoming

Job Training for Single, Low-income mothers: Addresses the numerous challenges and barriers facing single mothers of lower socioeconomic status while helping to meet the local demand for skilled workers. The mission of CLIMB Wyoming is to train and place low income single mothers in careers that successfully support their families.

Laramie County Adolescent Health program

Serving Adolescents up to the Age of Twenty: To assist in the prevention and intervention of teenage pregnancy in Laramie County by providing comprehensive medical, social services, education and counseling to adolescents at risk of pregnancy in Laramie County.

Laramie County Community Partnership

Connections Corner: Helps people in Laramie County move out of multi generational poverty.

Safe Harbor, a Children's Justice Center

Supervised Visitation and Exchange program: Assures a child can have safe contact with an absent parent without having to be put in the middle of the parents' conflicts or other problems.

Special Friends of Cheyenne

Mentoring Children at Risk: Provides positive, consistent adult role models to young children, ages 6-14, from single-parent, low-income households.

STRIDE Learning Center

Developmental Preschool Providing Early Intervention: Helps children with autism learn how to live with the challenges Autism will present in their life.

SE Wyoming Foster Grandparent Program

Youth Mentoring and Tutoring & Retired and Senior Volunteer programs: Provides meaningful volunteer opportunities for low-income senior citizens to serve children with special needs or who are at risk of academic failure.

Wyoming Senior Citizens, Inc.

Wyoming Senior Companions: Serves the dual purpose of providing low-income people over the age of 60 with the opportunity to earn a tax-free stipend for providing one to one support to adults aged 21 and over who have limitations that make it difficult for them to maintain their independence.

The programs on these two pages were funded during the 2009-2010 cycle. Some of these Program Partners did not submit 2010 End of Year reports as required, according to our funding allocation process. Therefore, a direct link cannot be provided.

For a complete listing of the programs approved for funding during the 2010-2011 cycle, visit this page on our website: <http://UnitedWayOfLaramieCounty.org/partners.asp>

Partnerships and Initiatives

PLAN 2-1-1

Plan 2-1-1 is now Wyoming 2-1-1, Inc. and the new organization has completed and began to implement their business plan. Wyoming 2-1-1, Inc. has been fortunate to receive the support and advocacy for Wyoming 2-1-1 from the Governor's office and our First Lady, Nancy Freudenthal. The organization has received funding from the Wyoming Office of Homeland Security, United Way of Laramie County and is in the process of working on a TANF (Temporary Assistance for Needy Families) grant from the Wyoming Department of Family Services. Once the TANF grant is approved, the organization will then have sufficient funding to build and implement 2-1-1 services in Wyoming in late 2010. The location of the call center will be determined based on site selection criteria developed by the 2-1-1 Plan Leadership Action Network Group and responses to our Requests for Proposals. Wyoming 2-1-1, Inc. is a Wyoming nonprofit organization with an elected governing board of seven members representing communities throughout the state.

What is Wyoming 2-1-1, Inc.?

When you need answers about where to go for clothing, food, rent, shelter, support groups, volunteerism and other types of community services, Call 2-1-1.

Wyoming 2-1-1 will be your Community Connection to Services.

2-1-1 is a three digit dialing code designated in 2000 by the FCC to provide widespread public access to community information and referral services. As of March 2009, 2-1-1 serves 46 states, 234 million Americans or 80% of the population. 2-1-1 is a no fee, confidential, information and referral line answered by trained specialists. These trained health and human service experts will have access to the most comprehensive database of community based organizations, government agencies and nonprofits throughout the state of Wyoming.

We are living through a period of economic and social transformation that has touched the lives of virtually everyone. As old jobs disappear before new ones are in place, as we seek to maximize the investment we have made in our public sector through "smart government". Wyoming's unemployment rate is the highest since 2003. While not as serious as in other states it still puts a strain on a system that has enjoyed low unemployment and job growth for several years. We are losing the largest percentage of jobs in the higher paying industries. We must also give increased attention to homeland security and emergency management. As change affects all of us, we must see new ways to connect with one another and with the resources all of us will need.

It is a major challenge for people to learn about and connect with services that are available. Too often, people looking for help in Wyoming do not know where to begin. Locating such basic resources as food, shelter, employment, or healthcare may mean calling dozens of phone numbers, then struggling through a maze of non-profit organizations and public agencies, each offering a multitude of services to make the right connections. These problems are exacerbated by the increase in unemployment, need for additional services, and our rural geographic nature, all of which increase complexity and erode traditional support systems. Early information and referrals regarding our communities' services make it possible to address needs before they become crises, thereby marshalling the state's resources. By providing callers with vital information we can reduce costs for additional services in the future.

Wyoming 2-1-1 Inc.'s mission is to serve our state with information and referral services delivered to the public via the telephone and the internet through a statewide call center; provide a comprehensive statewide database on health and human service resources that will assist call specialists in making referrals; represent a cooperative approach among government agencies and nonprofit service providers which uses data to assist community leaders and policy makers; and develop a system which increases cost efficiencies by incorporating a broad range of activities that are best undertaken at a system level.

Partnerships and Initiatives

Wyoming Free Tax Service (Formerly known as VITA)

The Wyoming Free Tax Service goal is to meet tax preparation needs for low income taxpayers making under \$40,000 per year. During the 2010 tax filing season, which occurred from February 1 to April 15, 2011, the Cheyenne/Laramie County Asset Building Coalition served 519 low income taxpayers in Laramie County providing them with \$246,034 in earned income tax credit (EITC) and \$133,681 in child tax credit.

Emergency Food and Shelter National Board Program

In 2010 Laramie County was awarded \$41,355 for Emergency food and Shelter Programs in Laramie County.

The selection for these funds was approved by a National Board that is chaired by the U.S. Department of Homeland Security's Federal Emergency Management Agency and consists of representatives from American Red Cross; Catholic Charities, USA; National Council of the Churches of Christ in the USA; The Jewish Federations of North America; The Salvation Army; and United Way Worldwide. The Local Board was charged to distribute funds appropriated by Congress to help expand the capacity of food and shelter programs in high-need areas around the country.

The Laramie County Local Board is made up of the County Emergency Management Director, United Way and representatives from the above organizations that determine through an application process how the funds are awarded to Laramie County Emergency Food and Shelter Programs run by local service agencies in the area.

Under the terms of the grant from the National Board, local agencies chosen to receive funds must:

- 1) be private voluntary non-profits or units of government
- 2) be eligible to receive federal funds
- 3) have an accounting system
- 4) practice nondiscrimination
- 5) have demonstrated the capability to deliver emergency food and/or shelter programs
- 6) if they are a private voluntary organization, they must have a voluntary board.

Qualifying agencies are urged to apply.

Laramie County has distributed Emergency Food and Shelter funds previously with The Salvation Army; Safe House Sexual Assault Services; COMEA House, Inc.; NEEDS, Inc.; American Red Cross; Attention Home, Inc.; and Community Action of Laramie County, Inc. These agencies are responsible for providing thousands of meals and hundreds of nights of lodging.

*"If your actions inspire others to dream more,
learn more, do more and become more,
you are a leader."
— John Quincy Adams*

Funding Allocation Process

Each United Way of Laramie County Community Program Partner undergoes a significant review to determine its effectiveness and adherence to United Way's Community Investment Team objectives and target issues that address needs in our community. Partners receive funding from United Way based on the evaluations from that review. Partners will demonstrate that they are actively collaborating with agencies/partners in the community as a way to ensure efficiency and non-duplicative services. Each partner must have accountability measures in place to track results from their agency.

The funding process is completed in two steps:

1) The first step requests basic information on potential partners and their program concept that can be used to address team objectives and target issues as identified in the Call for Partners (CFP) document. Based on these findings, concepts best addressing the team objectives and target issues will be invited to submit full proposals.

United Way of Laramie County offers free informational sessions on the application process. These sessions covered the following areas:

- Overview of the Call for Partners
- Program Concept
- Invitation for Proposal Overview
- Outcomes and Evaluation
- Timeline/Site Visits
- Reporting Requirements

2) The Invitation for Proposal (IFP) is the second step in United Way of Laramie County's funding process. By receiving the Request for Proposal, the Community Investment Team is interested in further exploring the concept the organization submitted during the Call For Partners. After reviewing the partnership qualifications and program concepts during the first phase of the process, the Investment Team evaluating programs felt at this point in time those program concepts best addressed the team objectives and target issues they identified in the Call For Partners. In the IFP request letter, the Investment Team reviewing the concepts has provided comments or additional information they wanted to see addressed in the final proposal.

United Way of Laramie County offers four information sessions on the IFP. The training covered the following areas:

- Overview of the Invitation For Proposal
- Submission and Decision Schedule
- Submission Guidelines
- Application Requirements and Format
- Additional Information Required

Funding Priorities: United Way of Laramie County, City of Cheyenne and Laramie County invest resources to address the most important human services needs in our community by partnering with new and existing programs to produce measureable, effective outcomes.

Funding Allocation Process

United Way of Laramie County has a long-standing partnership with the City of Cheyenne and Laramie County Commissioners to review and make funding recommendations for human-services programs. These governing bodies rely on United Way's Community Investment Teams to identify our community's human services needs, valuing their guidance and funding recommendations to provide human services programming to City and County residents.

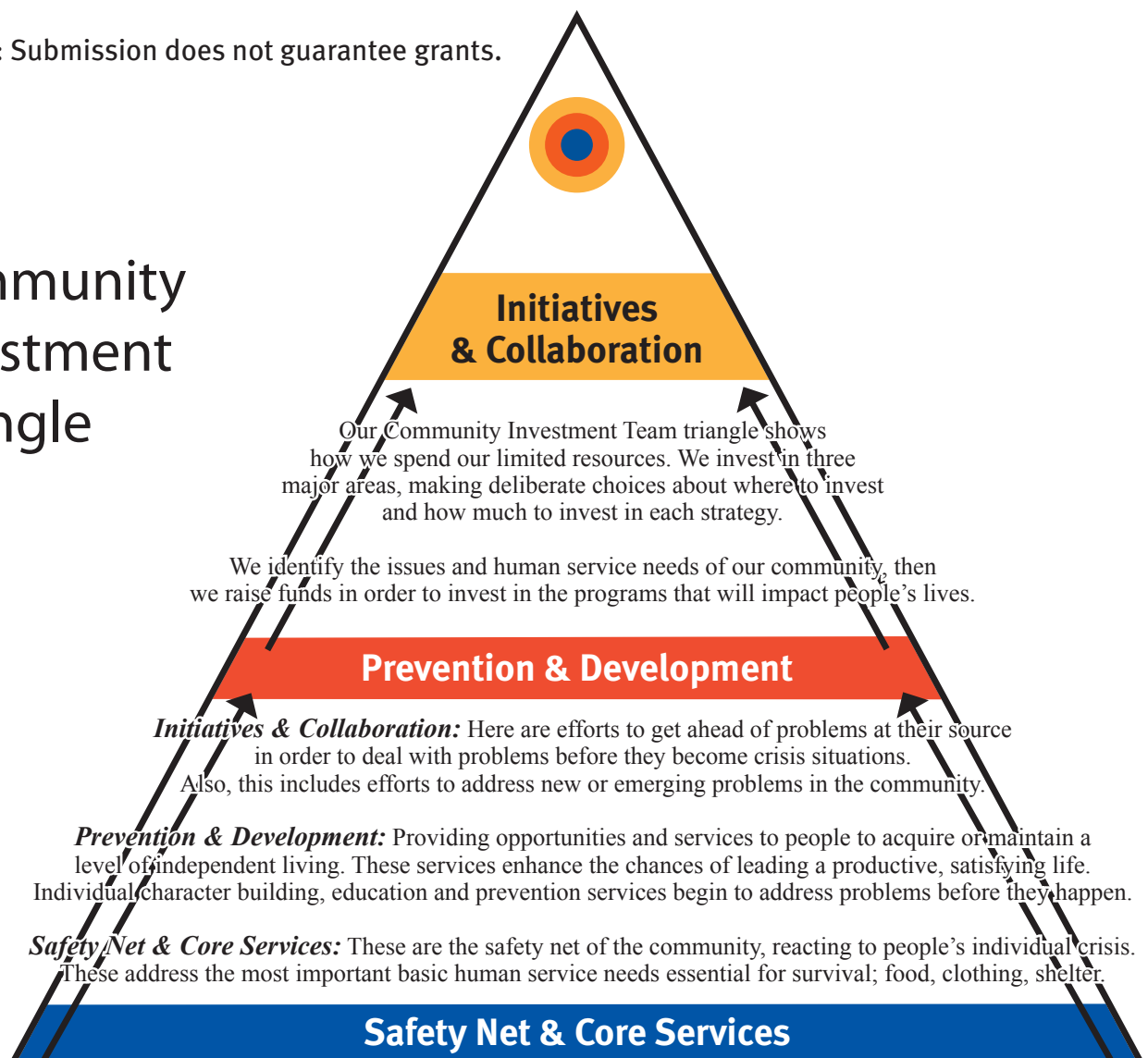
The United Way of Laramie County Community Investment Team objectives, target issues and intended results are identified (refer to 2009 campaign brochure) and focus our attention on the priority issues these teams feel are critical to our community's well being.

The Community Investment Teams consist of community members who are experts in the fields of finance, health, education, law, government, human services and business. The Teams routinely review and update the needs assessment to continue to focus on the most important human service issues in the community.

If you have questions about the application process please call United Way of Laramie County at 307.638.8904, or Community@UnitedWayofLaramieCounty.org.

Please note: Submission does not guarantee grants.

Community Investment Triangle



2009 Campaign Co-Chairs

On behalf of all of four of the 2010 the Co-Chairs we would like to extend our thanks to the United Way Board, the Staff and Connie for the support and help during the 2010 campaign. And we truly want to thank each of you.

Whether you personally gave to the campaign, donated your time and talents as a volunteer, or did both, we thank you for your dedication and strong support. You are the heartbeat of the campaign and every life we touch is done so because YOU gave in some way.

Our financial supporters continue their generosity so that those less fortunate can have a chance at better circumstances. Our volunteers, many who have volunteered for several years and who return to help year after year, work tirelessly to help us all in our quest to LIVE UNITED.

Through our Program Partners and other Initiatives United Way leverages the money donated. This helps our entire community by expanding the services our Program Partners can offer. Our new brochure for 2011 uses the number twenty six thousand, three hundred and thirty eight (26,338). This number represents the number of Laramie County residents that through our Program Partners we have helped in 2010. 26,338! That is a lot of people whose lives have been touched by your donations.

Our Program Partners are clearly helping to improve Laramie County, and it is all made possible by your support.



Lyn Birleffi and Phil Noble

On behalf of each and every one of the kids we have helped, their parents, and the adults and seniors in our community that have received some type of assistance or service from our Program partners, THANK YOU!

It truly has been a great year for United Way, and each of you has made that possible. Even during tough economic times throughout the United States, we here in Cheyenne and Laramie County have stepped up and made 2010 our strongest year. Our Mission Statement is A BETTER LARAMIE COUNTY, and our VISION IS NO ONE IN NEED. Thank you for being a part of this Mission and Vision!

All four of us anxiously look forward to the 2011 campaign. We know with YOUR help we can continue to grow and help Laramie County!



Tim and Kathy Joannides

Tim Joannides *Kathy Joannides*
Phil Noble *Lynn Birleffi*

2010 Campaign Volunteers

Marketing Committee

Michele Bolkovatz, Chair	Warren Federal Credit Union
Tara Alexander	Cheyenne Leads
Matt Cox	
Barry Kistler	FE Warren AFB
Julia Malm	The Property Exchange
Gwen Perdue	Wachovia Advisors
Kent Shriner	Peak Promotions
Barbara Stafford	Rocky Mountain International
Marc Stout	Traders
Robert Thein	KGWN TV
Rachelle Zimmerman	Wyoming Tribune Eagle

Team Captains

Margo LaHiff	Warren Federal Credit Union
Natalie Gutierrez	Cameco Resources

Loaned Executives

Pat Ashworth	Express Employment Professionals
Michael Christ	Cheyenne Health and Wellness
Dave Cook	Cheyenne State Bank
Aaron Courtney	First National Bank
Robert Jacobson	Security First Bank
Jory Kaufman	US Bank
Kevin Kisicki	Wyoming Bank & Trust
Ron Mauritz	Tyrrell Doyle Auto Center
Rev. Elizabeth McVicker	First United Methodist Church
Andrew Miller	American National Bank
Kathleen Peterson	Consumer Credit Counseling Services
Olivia Samson	Wyoming State Bank
Lori Schoeneon	First National Bank
John Smyth	Tyrrell Doyle Auto Centers
Nancy Udell	Security First Bank
Michael Williams	Jonah Bank of Wyoming
Karen Wiltanger	Foster Grandparents

Pacesetter Loaned Executives

Beth Allen	Consultants in Surgery, PC
Brittany Ashby	Western States Learning Corporation (Align)
Christine Cox	State of Wyoming
Brian Lenell	Personal Financial Solutions
Andrew Miller	Wyoming State Bank

Speakers Bureau

Kathy Cathcart	Align
Christine Cox.....	State Attorney General's Office
Stephen Goldstone.....	Cheyenne Regional Medical Center
Pam Ivey	CLIMB Wyoming
Rob Kilian	First Interstate Bank
Sharon Roberts-Meyer.....	WIN Health Partners
Ron Van Voast.....	Security First Bank

2010 Campaign Media Partners

2010 Underwriting Circle

Bresnan Communications
Matt Cox—The Wyoming Business Council
Gapwest Broadcasting
Marrs Photography
Trader's Shoppers Guide
WyomingNetwork.com
Wyoming Tribune Eagle—WTE Commercial Printing

2010 Media Circle

Appaloosa Broadcasting - KRRR, KAZY, KRAN and KRAE
Bresnan Communications
CBS NewsChannel TV5 and the Cheyenne CW
Gordon Sign
KLWY Fox Television, Cheyenne and Scottsbluff
Montgomery Broadcasting - KFBC Radio
NextMedia Outdoor, Inc.
Townsquare Media, LLC. - KIGN, KLEN and KGAB
Trader's Shoppers Guide
Wyoming Business Report
WyomingNetwork.com
Wyoming Tribune Eagle—Advertising Department

Very special thanks to Wyoming Tribune Eagle Advertising and Marketing Departments, and WTE Commercial Printing Division for underwriting all of the campaign printing expenses!



WyomingTribuneEagle

Additional promotional support

Greater Cheyenne Chamber of Commerce

LaFamilia Broadcasting, LLC

Laramie County Community College

—Public Relations and Student Life &
Services

Laramie County Library

—Community and Media Relations

Peak Promotions

The Print Gallery

The Warren Sentinel

2010 Annual Corporate Sponsors

Our annual corporate sponsors provide the funding for all our events.
Campaign funds are never used to fund any of our events.

DIAMOND

Cheyenne Spradley Barr Motors, Inc.

Halladay Motors

Warren Federal Credit Union

Wyoming Bank & Trust and #1 Properties

Holiday Inn Cheyenne

Align

The Plains Hotel

Cheyenne regional Medical Center

2010 Annual Corporate Sponsors



Cheyenne Regional Medical Center



2010 Annual Corporate Sponsors

GOLD

Frontier Refining, Inc.



Silver

Jonah Bank

McGee, Hearne & Paiz, LLP

Wells Fargo



Bronze

American National Bank

Pinnacle Bank

US Bank



Sterling

Cheyenne State Bank

Delta Dental

Pointe Frontier

Wyoming State Bank



2010 Car Voucher program

Halladay Motors, Inc..... Tim Joannides
 Kia of Cheyenne Greg & AJ Miller
 Spradley Barr Motors, Inc. Bob Womack
 Final Drawing Host
 CBS NewsChannel TV5 and the Cheyenne CW



The 2010 Car Voucher winner, Jonas McKinley is shown here with his new Subaru. The 2010 winner of the \$500.00 Cash drawing is Cory Jilek (pictured on page 46 accepting his check)

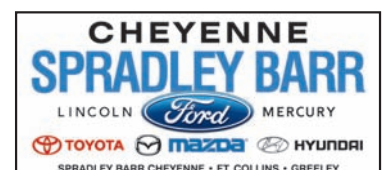
Tell me More!

The Car Voucher program is a combined effort of Laramie County auto dealerships that give a total of \$20,000.00 toward a car voucher. The voucher is used as an incentive prize for donors of United Way of Laramie County. There are thirteen weekly drawings.

The semi-finalists are entered in the final drawing for the 2010 Campaign that was held January 1.

This year's participating auto dealerships were Halladay Motors, Inc., Kia of Cheyenne and Spradley Barr Motors, Inc.

In addition, United Way of Laramie County offers employees of the participating auto dealerships an opportunity to win \$500.00 cash. Employees of participating auto dealers are not eligible to enter the drawing for the \$20,000.00 car voucher. The cash prize is covered by the combined effort of our generosity of the three sponsoring car dealerships.



2010 Uniting Our Community Award

Cheyenne Regional Medical Center was presented with the 2010 “Uniting our Community” Award. This award is presented to a company that has shown a high level of participation in the local campaign through volunteer hours and donations.

In 2010 CRMC initially agreed to match up to \$25,000 of their employees donations. When the employees raised over \$34,000 CRMC doubled its initial match for a total contribution of OVER \$84,000.

This type of community leadership is evident every day at CRMC where Dr. John Lucas and the employees demonstrate a commitment to our community through a variety of initiatives and community support programs.



Dr. John Lucas and Dr. Phyliss Sherard are pictured with the 2010 Uniting Our Community Award.

Past Uniting Our Community Award Winners

2009	Wyoming Machinery	1995	Wyoming Tribune Eagle
2008	Halladay Motors, Inc.	1994	Fassett Nickel Ford (Spradley Barr Motors, Inc.)
2007	Dray, Thomson & Dyekman	1993	American National Bank
2006	Laramie County School District #1	1992	Dain Bosworth (RBC Wealth Management)
2005	Lowe’s Distribution Center	1991	McGladrey and Pullen (McGee, Hearne & Paiz, LLP)
2004	Wyoming Bank & Trust	1990	KGWN-TV5 (Cheyenne NewsChannel TV5 and the Cheyenne CW)/US West (Qwest)
2003 ..	Greater Cheyenne Chamber of Commerce		
2002	Warren Federal Credit Union		
2001	City of Cheyenne and BOPU Employees		
2000	Dinneen Motors		
1999	Western States Learning Corporation (Align)		
1998	State of Wyoming Employees		
1997	United Medical Center (Cheyenne Regional Medical Center)		
1996	Key Bank (Bank of the West)/Safecard Services (Trilegiant)		

2010 Special Events and Promotions

2010 Campaign Kickoff and LCSD#1 Campaign
Breakfast and the Thank You Reception
Holiday Inn

Volunteer's Thank You Luncheon
The Historic Plains Hotel

Thank You reception
The Historic Plains Hotel

CFD Rodeo sponsor box
Union Pacific Railroad

Pointe Frontier Retirement Community
Community Dinners for the 70+ neighbors

Wyoming Tribune-Eagle's Friday's on the Plaza
June food drive, July personal care items drive,
August school supplies drive, weekly collections
totaled 4 boxes of food, 3 boxes of personal care
items.

National Volunteer Week
Eileen's Cookies

*Donors and
Volunteers are asked to
BELIEVE and LIVE UNITED at the 2010 Kick-Off event.*

2010 Special Events and Promotions

9th Annual Warren Federal Credit Union
Golf Tournament
Stacy Maatman, Chair
Diane Segal and Margo LaHiff, Co-Chairs
Warren Federal Credit Union works nearly
year-round to host the annual golf tournament which
benefits United Way of Laramie County.

Arbonne Promotion
Cindy Richmond, Consultant

United Way of Laramie County
2010 Board Retreat Facilitator
Mona Pearl, Align Professional Development

2010 LIVE UNITED Video Project
voice: Phil VanHorn, Align
filming: Matt Cox, Wyoming Business Council

Office Volunteers
RSVP Volunteers
Laura Riley, Synergy HomeCare
Tamara Guggenmos

Car Voucher Program Driver
Dave Faas
United Way of Laramie County's Car Voucher
program giveaway allows us to display new cars
at local businesses and government departments
during their employee campaigns, upon request. Car
driver volunteers assist in the pickup and delivery of
vehicles from the participating auto dealerships.

2010 Business Partners and Employee Campaigns

United Way of Laramie County receives a high level of support from the business community. We sincerely appreciate the generosity demonstrated by our business partners who care about people in need. In order to recognize businesses with similar resources, business donors are acknowledged in the following categories:

Pacesetters

Our Pacesetters “set the pace” for the fund-raising campaign. These special companies run their campaigns early and are completed in time for the Kick-Off in August. Pacesetters conduct their campaigns before the marketing for the general campaign begins, so they must be companies that understand and support the United Way mission. Pacesetter companies conduct employee campaigns as well as make a corporate donation. The total gifts gathered by the Pacesetter companies are announced at the Kick-Off with public recognition and a sincere thank you for the tremendous community commitment these firms represent.

Professional Fellowship

Professional individuals and firms, including physicians, dentists, attorneys, accountants, real estate brokers, architects, engineers, financial institutions and others, offer our community the services we need to continue to have a strong economy. We deeply appreciate the commitment of resources that our professional community has made to our campaign and our mission of “no one in need.”

Principal Partnerships

Principal Partners are businesses with employees of 75 or more. These businesses are critical to the success of United Way and the economic development of our area.

Corporate Club

United Way of Laramie County recognizes businesses which have employees of 25-75 in the Corporate Club. These businesses are a critical piece in the continued growth of Cheyenne. These businesses made a significant contribution to the 2008 Campaign.

Small Business Alliance

Small Business partners, which have 25 or less employees, are an instrumental part of our community. We are thankful that the businesses who have been recognized in our Small Business Alliance have selected United Way of Laramie County as one of their “charities of choice.”

Nonprofit Contributors

Many nonprofit organizations offer their employees the chance to participate in employee campaigns. Thank you to our contributors who not only work in service to our community, but give back as well.

2010 Pacesetter Companies and Coordinators

Our Pacesetters “set the pace” for the fund-raising campaign. These special companies run their campaigns early and are completed in time for the Kick-Off in August. Pacesetters conduct their campaigns before the marketing for the general campaign begins, so they must be companies that understand and support the United Way mission. Pacesetter companies conduct employee campaigns as well as make a corporate donation. The total gifts gathered by the Pacesetter companies are announced at the Kick-Off with a sincere thank you for the tremendous community commitment these firms represent.

Align	Sherry Salmon
Allstate Insurance Company	Ardice Luce
American National Bank	Scott Van Horn
Blue Cross/Blue Shield of Wyoming	Kathi Tarantola
Cameco	Natalie Gutierrez and Kenneth Vaughn
CBS News Channel 5	Patricia Murphy
Cheyenne LEADS	Karen Gastineau
Cheyenne Light, Fuel & Power	Marc Eyre and John Sierocki
Cheyenne State Bank	Dave Cook
Dyno Nobel	Anna Frogge and Lindsay Barton
First Cheyenne Federal Credit Union	William Helms
First Interstate Bank	Kelly Kinsel
First National Bank of Wyoming	Trina Sitton
Halladay Motors, Inc.	Terese Becker
Jonah Bank	Linda Woolsey
McGee, Hearne & Paiz, LLP	Amy Mitchum
Personal Financial Solutions, Inc.	Brian Lenell
RBC Wealth Management	Joseph Marek
Schreiner & Weskamp, LLC	Roger Schreiner
Security First Bank	Bernie Halle and Pamela Mosser
Spradley Barr Motors, Inc.	David Sutherland
Taco John’s International, Inc.	Burt Grant and Vicki McGee
Tri-County Bank	Carol Farrell
Tyrrell Doyle Auto Centers	Ron Mauritz
Union Pacific Railroad Foundation	Dick Hartman
Union Pacific Railroad	Dick Hartman
United Way of Laramie County	Deborah Phillips
US Bank	Sharon Bonar
Wallick & Volk, Inc.	Anita Johnston
Warren Federal Credit Union	Bruce Brady
Western Vista Federal Credit Union	La Velle Van Voast
WINHealth Partners	Sharon Roberts-Meyer
WyHy Federal Credit Union	Judy Henderson
Wyoming Bank & Trust	Kevin Kisicki
Wyoming Machinery Company	Lillian Gosbee
Wyoming State Bank	Julie Hayes
Wyoming Tribune-Eagle	Rachelle Zimmerman

Professional Fellowship

Professional individuals and firms, including physicians, dentists, attorneys, accountants, real estate brokers, architects, engineers, financial institutions and others, offer our community the services we need to continue to have a strong economy. We deeply appreciate the commitment of resources that our professional community has made to our campaign and our mission of “no one in need.”

Cameco Resources
First Interstate Bank
Swan Ranch Granite Peak Development
American National Bank
Wells Fargo
RBC Wealth Management
Jonah Bank of Wyoming
Bar S Services, Inc.
Wyoming State Bank
US Bank
Gay Woodhouse Law Office, P.C.
Simpson Electric Co.
Blue Cross/Blue Shield of Wyoming
First Cheyenne Federal Credit Union
Sundahl, Powers, Kapp & Martin, LLC
Art Reese Consulting LLC
William D. Bagley, Attorney at Law
Cheyenne Obstetrics & Gynecology, Inc. P.C.
Fowler & Peth, Inc.
Halley & Murray, CPAs, P.C.
J.F.P. Properties LTD. Partnership
Wallick & Volk
Wyoming Bank & Trust
Rogers Law Firm, P.C.
Personal Financial Solutions, Inc.
Thorson Development
Laramie County Chiropractic, LLC
A.V.I., P.C.
Cheyenne Women’s Clinic
Dohn Construction, Inc.
Dr. Don Jorgensen
Farm Bureau Financial Services
First American Title Company of Laramie County
First National Bank
Hickey & Evans, LLP
Hunter Engineering Corp
Kincheloe Dental Office, PC
Laramie County Abstract & Title Co.
Marv’s Plumbing & Heating, Inc.
Pappas & Pappas, Architects
S & S Builders, LLC
Security First Bank
Steil Surveying Services, LLC
Western Vista FCU
Wiederspahn-Radomsky Chapel
WyHy Federal Credit Union
Mark R. Stewart, Attorney At Law, P.C.
Freudenthal & Bonds, P.C.
Alvin Wiederspahn J.D., P.C.
Cheyenne Family Dental Center
Harold F. Johnson Masonry
Preferred Management, LLC
Schrader Funeral Home
Reconciling Business, Inc.
Rocky Mountain Capital Agency
Aspen Ridge Law Offices, P.C.
State Farm Companies Foundation
Anne S. Wagner, LCSW, P.C.
Bank of the West
Century 21 - Bell Real Estate
Frontier Veterinary Clinic
Hastings & Associates, Appraisal Services
Jan H. Paul / Architect
Richardson Construction, Inc.
Speer Strategic Communications, LLC
Torix General Contractors
Sturm Financial Group, Inc.
Executive Suites Downtown Cheyenne

Principal Partnerships

Principal Partners are businesses with employees of 75 or more. These businesses are critical to the success of United Way and the economic development of our area.

Magnate – \$10,000.00 or more

Union Pacific Foundation
Frontier Refining, Inc.
Cheyenne Light, Fuel and Power
Dyno Nobel
Wyoming Tribune Eagle
Taco John's International
JC Penney - #2058
Jeld-Wen of Cheyenne
Wal-Mart/Sam's - 1315 & 6430
Target Store of Cheyenne
Dillard's

*"Be the change you want to see in the world."
— Mahatma Gandhi*

Corporate Club

United Way of Laramie County recognizes businesses which have employees of 25-75 in the Corporate Club. These businesses are a critical piece in the continued growth of Cheyenne. These businesses made a significant contribution to the 2009 Campaign.

Qwest
Halladay Motors
Town & Country Supermarket Liquors
Gater Industries
Spradley Barr Motors, Inc
King Soopers
CBS News Channel 5
Priess Enterprises, Inc. # 226
The Boot Barn - Dell Range
The Boot Barn - Frontier Mall
The Wrangler

Small Business Alliance

Small Businesses (employees of 25 or less) are an instrumental part of our community. We are thankful that the businesses that are recognized in our Small Business Alliance have selected United Way as one of their “charities of choice.” The following categories have been established for the Small Business Alliance:

Wyoming Machinery Company
Mechanical Systems, Inc.
Pinnacle Cabinets & Millwork Inc.
Jodie and Julie Malm
Orrison Distributing, LTD
QEP National
Trader’s Shoppers Guide
Mr. and Mrs. C. Robert Johnigan
B & W Glass, Inc.
D.T.’s Liquor Mart/Tusker’s Bar
ABC Seamless
Bouquets Unlimited, Inc.
Capital Business Systems, Inc.
Express Employment Professionals
Lummis Livestock Company LLC
NAPA Genuine Parts of Cheyenne, Inc.
Pioneer Printing
Teton West Lumber
Wyoming Trophy & Engraving
D.T.’s Package Liquors & Fine Wines
Buck’s Auto
Fleischli Enterprises, Inc.
Town & Country Pharmacy
B & B Appliance & TV
Frontier Access & Mobility Systems, Inc.
Gill Window Company

DayWeather, Inc.
Peak Promotions, Inc.
AAMCO Transmissions
American Cleaners Tailors
Meineke Car Care Center
Moore Insulation Co., Inc.
Iron Mountain Bison Ranch, Inc.
Appraisals, Inc.
Capitol Tours & Travel, Inc
Marv’s Place, Inc
Palomino Industries, Inc.
Arbonne International
Sam’s Auto Sales & Parts

*“For it is in giving that we receive.”
— St. Francis of Assisi*

Nonprofit Contributors

Our nonprofit category is for nonprofits, foundations and civic organizations. Many nonprofit organizations offer their employees the chance to participate in employee campaigns. Thank you to our contributors who not only work in service to our community, but give back as well.

Cheyenne LEADS

Cheyenne Regional Medical Center

Greater Cheyenne Chamber of Commerce

Laramie County Community Partnership

Wyoming Children's Action Alliance

*"The only gift is a portion of thyself."
— Ralph Waldo Emerson*

United Way Program Partner's Employee Campaigns

Boys and Girls Club of Cheyenne

Cheyenne Health and Wellness Center

CLIMB Wyoming

Connections Corner

Consumer Credit Counseling Service

Foster Grandparents

Peak Wellness Center

Stride Learning Center

Alexis de Tocqueville Society

Legacy Club

Trailblazers

Explorer

Adventurer

Settler

Pioneer

Partners of Influence

Heroes of Action

Heroes of the Heart

Heroes of Success

Additional Partners of Influence

Government Employee Campaigns

State of Wyoming

Laramie County School District#1

Laramie County Community College

City of Cheyenne

Laramie County

Alexis de Tocqueville Society

Anthony G. and Barbara F. Andrikopoulos

Dr. Jeffrey and Lynne Carlton

Gregory C. Dyekman

Paul and Beth Howard

Doug and Susan Samuelson

Dr. Ron and Carol Waeckerlin

Joannides Family Foundation,

Tim and Kathy Jaonnides.

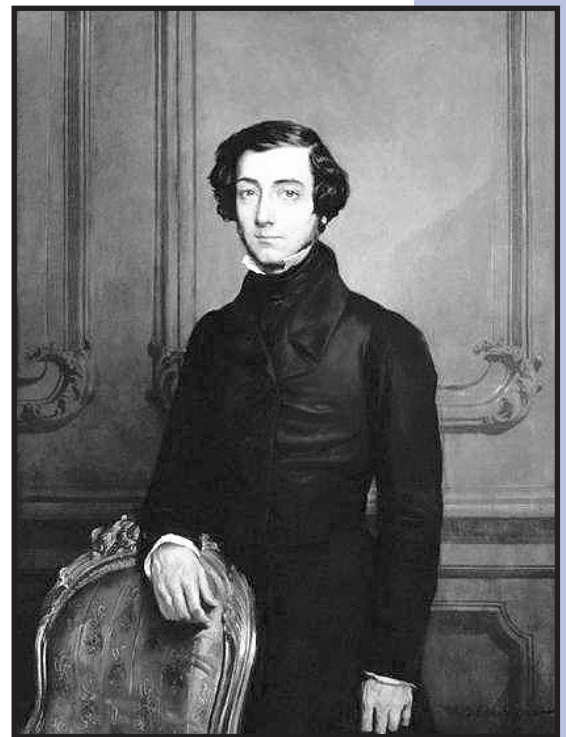
United Way of Laramie County is proud to be part of United Way of America's Alexis de Tocqueville Society. Membership in this society is granted to individuals who have given \$10,000 or more to an annual campaign. This society epitomizes the spirit of community that we share in Cheyenne. Many of us want to help each other ... and especially to help others that may be less fortunate. Your support of United Way is just one way that shows this type of "caring for your neighbor."

If you would like to know more about the Alexis de Tocqueville Society, we have information that we could mail to you about the society, the benefits to its members and some of its history.

The Alexis de Tocqueville Society was created by United Way Worldwide in recognition of a young man who traveled to America in the early 1800's and who wrote a detailed study of American society and politics. Perhaps his most important observation was that Americans helped each other in times of need. He wrote, "I have seen Americans make great and real sacrifices to the public welfare; and have noticed a hundred instances in which they hardly ever failed to lend faithful support to one another." The name Alexis de Tocqueville Society was chosen because of Tocqueville's admiration for the spirit of voluntary association and voluntary effort for the common good.

United Way of Laramie County
Alexis de Tocqueville Society

"We choose to give to United Way because we can help so many people in so many ways. The impact on people's lives is great but the needs continue to grow. We encourage others of you to join us in helping the Alexis de Tocqueville Society grow for the good of those in need throughout Laramie County."



Alexis de Tocqueville 1805-1859

"As soon as individuals with a cause have found one another out, they combine. From that moment, they are no longer isolated people, but a power seen from afar, whose actions serve for an example, and whose language is listened to."

Legacy Club

The Legacy Club was founded in 1990 to honor those whose commitment to our United Way demonstrates leadership level giving with a family gift of \$500.00 or more. This commitment is renewed yearly.

Trailblazers – \$5,000.00 to \$9,999.00

Rhonda Sigrist Woodard and George J. Kallas
Pete and Connie Cathcart
Robert J. Connaghan
Robert L. Cushman
Ken and Susan Dugas
Sandra K. Surbrugg, M.D. and Robert Prentice, M.D.

Explorer – \$2,500.00 to \$4,999.00

Stephen and Christine Schmerge
Gerald and Kathleen Carlson
Randy and Patty Johnston
Paul and Kathy Cathcart
Carl and Wilma Lathrop
Dr. Richard and Patricia McCleery
Robert and Julie Tiedeken
2 Anonymous donors

Adventurer – \$1,500.00 to \$2,499.00

Stephen and Linda Goldstone	Robert and Jenny Garrison
Mona Lee Pearl	Matthew and Brittany Ashby
John C. and Esther L. Clay	Ms. Jerri Ann Donahue, DDS
Margaret D. Lauer	Don and Vanda Edington
Dan and Gwen Perdue	Rich and Mary Ann Hillman
Jim and Brenda Creel	Joe and Chris McRady
Mike and Krista Williams	Jeffrey and Lori Sauter
Bob and Mary Lampert	Craig and Judith Schulz
Gayla and Max Maxfield	Mike Shonsey
Dr. Rod and Sue Anderson	Barry and Robin Sims
Robert J. Fryml	3 Anonymous donors
Phil and Marsha Kiner	
Rich, Michele, Mikala and Moriah Bolkovatz	

Legacy Club

Settler – \$1,000.00 to \$1,499.00

Richard and Cindy Reynders
Pat and Jan McGuire
Conn and Aimee Lewis
Dave and Terri Faas
Walt and Jacque Westover
Bruce Brady
Rick and Jo Ann Swaney
Robert and Shani Anderson
Eric and Monica Puente
Thomas and Dixie Roberts
Chris Robinson
Terry and Deborah Phillips
Terry and Chris Bartholomew
Vincent T. Bocchino
Kathryn and Chris Boswell
C. J. Brown
James D. Casey
Sherri Casey
Tim and Tricia Crilly
Allan and Teresa Cunningham
Phillip Egan
Mark and Debra Falk
Robert and Barbara Fecht
Jane and Jim Forbes
Robert D. Fornstrom
William and Rosario Goranson
Jon F. Jacquot
Kathryn A. Jenkins
Bob and Jill Jensen
Jack and Sharon Knudson
Steve and Carol Lindly
Martin and Nanette McCoy
J. Brenden and Blenda McKinney
Dr. Larry and Vicki Meuli
Rita C. Meyer
Kevin and Lisa Paintner
Bob and Janet Peck

Jane Robinett
Ted and Jolene Robinette
Ty and Amy Stockton
Dennis and Sandra Wallace
Joseph and Cindy Marek
Gregg and Dorrie Jones
Larry and Bev Catalano
Michael and Addie Ceballos
Jeffrey and Elizabeth Hoy
Kevin and Merri Burkett
Harry and Lucie Osborn
Stephen and Karen Lee
Robert and Brandee Dahill
Russell and Lisa Hay
Jim and Peggy Hearne
Wayne and Shelley Herr
Jeanette and Earl Hursman
Lynn McAuley
Darrell and Jane Moran
Ronald and Patricia Nimmo
Joseph J. and Sylvia A. Paiz
Jeff and Diana Wallace
Tiffany and Mike Smith
Vincent and Amy Balland
Richard and Paula Cripe
Marietta T. Dinneen
Brian Fitts
Bob R. Hansen
Richard Hebert
Mr. and Mrs. James and Sunny
Kaste
Randy Leinen and Linda Rogers
John Lucas
John P. McBride
Sara and Bryan Pedersen
Courtney Popham
Jeff and Marian Schulz

Kirk Shamley and Mary Ellen
Sternitzke
Brent Weigner and Sue Hume
Jack Whyatt
Steven and Jaime Winchell
Kenneth and Barbara Vaughn
Robert P. Robinson
Janet M. Tilton
Gordon and Kimberly Webb
John E. Lynch
Steve and Cheryl Lovas
Tom and Chris Bass
Kay Lynn Bestol
Kevin Boyce and Mary Throne
Walter Eggers and Maggie Allely
Jim and Estelle Haefele
Theodore and Nina Belle Hoy
Jay A. Jerde
Dr. Duane and Joanna Kline
Marvel H. McCracken
Bob and Sandra Murray
Gwen Rice
Lucille Simpson
Jack and Carol Speight
Larry and Kim Sutherland
Lawrence and Jennifer Wolfe
6 anonymous donors

Legacy Club

Pioneer — \$500.00 to \$999.00

Patrick and Roxanne Parsonault
Dennis and Cristeen Jessen
Marty Knaub
John and Carma Corra
Eric and Jenny Hargett
Bill and Gudrun Helms
Sheila R. Ricley
Richard and Marla Worley
Douglas and Kari Chandler
Marvin and Susan Frerich
John and Meleny Cox
Mark and Marie McKay
Shawn and Amiee Reese
David and Connie Stearns
D. Sharon Fain and Dale Steenbergen
Lonny and Lynda Berckefeldt
Jack and Kelly Willmarth
Ron and La Velle Van Voast
Michael and Marybeth Finn
Kevin Powell and Sue Lowry
Jim and Vicki Hughes
Gus Jim Kallas
Michael and Beverly Dowling
William and Traci Willingham
William and Zeta Gray
Lisa Fink
Brian and Cynthia Greene
Mike and Janice McCracken
Ruth and Bill Westerfield
Dean and Debra Winsch
Thomas and Cynthia Patras
Joe and Cindy Bonds
Jerry and Diane Egge
Dr. Fred and Keren Emerich
Bruce and Christine Fitzgerald
Betsy and Tal Gerringe
Calin O'Brien
Lance West
Randy Bruns and Donna Martin
Joseph C. Dougherty
Cassandra and Guy Driver
W. Alan Hughes
Allison S. Kisicki
Robert T. Moore
Joe and Shannon Stanfill

David and Stephanie Teubner
David R. Johnson
Stephanie Reeves
Gary and Lori Schoene
Pete and Sandy Pedersen
John and Julie Stetson
Steven Howell
Mayor Rick Kaysen and Ms. Diane Kaysen
Jacqueline Ferrall
Jeanette Beman
Donald and Terri Brantz
Roland and Kathleen Peterson
Larry and Patty Walters
Tim and Jane Montoya
Jeff and Beth Allen
Stacy Goodwine
William and Susan Keenan
Larry and Susan Pixley
Chaquita S. Powers
Tom and Erin Rooney
Carol Schiel MD
John and Rebecca Selby
Phil and Gay Van Horn
Steve and Rachelle Zimmerman
Greg and Karen Rich
Scott and Elaine Hayes
William and Cindy Hegner
Jeff and Janice Lee
Steve and Linda Dilsaver
Roberta and Doug Coates
Amy B. Bennett
George and Patricia Escobedo
James and Mary Archer
Roselyn Wallach Baker
David and Susan Birney
Lesley Boughton
Laura K. Bowen
Nathan and Julie Breen
Todd and Dyan Burns
Bob and Dee Clary
Patrick and Vicci Colgan
Dan Cooley and Robin Sessions Cooley
Gary and Mary Cox
John and Angela Crotsenberg

Heidi R. Dardano
Eileen T. Dinneen
Dr. Beth Evans
Debra K. Ferguson
Brian Goodrich and Jennifer Wagner
Sylvia Lee Hackl
Stig and Beth Hallingbye
George Curt Helzer
Deanna K. Hill
Dennis and Denise Huff
William and Kristin Jackson
Kenneth Lewis and Sarvin Emami
Karl and Marci Linde
Wayne and Kristie Lindquist
Floyd and Debbie Lopez
Dave and Helen McCracken
Daniel and Victoria Morris
John and Joanna Perkins
Lee and Darla Potter
Kristen and Jerimiah Rieman
Byron and Carol Rookstool
Jennifer J. Rosentreter
Thomas W. Rumpke
Brent and Patty Sherard
Todd and Helen Stalker
Linda K. Swartwood
Sheryl Rutt Swilling
Jeff and Becky Tish
Erik Tuttle Family
Stephen and Jo Underwood
Robert VanRisseghem and Jeanne Cates
Carol and Phil Velez
Jeff and Kathy Vogel
Robin Werner
Tamara Wilkins
Thomas and Mary Williams
Marius D. Wilson
Richard and Laura Wright
Steve and Sheri Zakis
Mr. and Mrs. Phil E. Clark
Roy and Sandy Bechtholdt
Dr. and Mrs. Craig S. Brown

Legacy Club

Pioneer continued

Michael and Lisa Geesey
Rose M. Kor
John and Brenda Lyttle
William and Karen Obermeier
Ashley and Doug Schulz
Steve and Ann Secrest
Andrew B. Shaw
David and Ginni Sutherland
Douglas and Debora Stundon
Glen and Susan Garrett
Rod and Deb Hottle
Chuck and Judy Lane
Tom and Lynn Annear
Aaron and Chelsea Colbert
Nancy L. Cornish
Robert and Amber Dancliff
Dr. Kleanthis & Aimee Dendrinios
James P. and Stephanie H.
Denning
Neil and Kay Emmons
Jeri W. Griego
Orlando Guzman
Jeff and Loran Herstein
Jan and Ken Hertel
Allen C. Johnson
Jim and Celia Landen
Bob and Peggy Leland
Christopher Maestas
Sharon Roberts-Meyer
Clint and Tina Nelson
Jose and Kate Ramirez
Teresa K. Read
Dr. Ann A. Reyes and Che M.
Reyes
David E. Rood
Lysbeth A. Selby
Jeff Shaffer
Margaret E. Smith
Rachael Svoboda
Eric and SanDee Underhill
Steve and Deborah Ferrell
Patrick Green and Teri Hawley-
Green
Robert and Valerie Rodekohr
Anna L. Thompson
Daniel and Diane White
William W. Martin
Ron and Ella Mae Brown
Shelby J. Brown
Richard and Susan Chambers
Carlene B. Crall
Robert and Joyce Dill
Kathy C. Emmons
Darlene Gallegos
Larry and Lori Gardner
David K. Goepfert
Pat and Susan Jaure
Aaron R. Martens
Pete and Diane Muehl
Jacklyn M. Norviel
Matthew and Karen Pope
Dan Steege
Thomas and Gretchen Stuckey
Jason and Kristen Tafoya
Kenneth and Deborah Tuma
Derek and Janice Turman
Scott Walker
Kristin A. Williams
Tim and Marsha Fields
Danny and Pam Glick
Carol Clarke
Michael and Emily McGrady
Gregory A. Long
In memory of James and Hilda
Baddaker - Annete Spitsbergen
Robert E. Jacobson and Dorothy
J. Jacobson
Brian and Melissa Martin
Michael and Penni Straw
Chris Allen and Leigh Vosler
George J. Argeris
John and Cathy Balser
Linda L. Cooper
Bob and Bev Curtis
Randy Dancliff
John Dinneen
William and Elizabeth Edwards
Randy and Sue Ford
Shirley A. Gerard
Carl and Joanne Halladay
Ken and Gayle Heinlein
Dr. and Mrs. W. Joseph Horam
Rob and Cathy Jarosh
David and Kimberly Miller
Joe Mondello
Therese M. Murray
George Powers and Marguerite
Herman
Edward and Nancy Prosser
Randy Reed
Shirley Garrett-Robinson
Bob and Ginny Rowland
Nicole Gamst and Darren Rudloff
Larry and Patricia Seitz
Greg and Danae Stampfli
Holly Hansen and Duane
Stevenson
Brian A. Tyrrell
Ted Williams and Ruth Rentzell-
Williams
34 Anonymous donors

Partners of Influence

Partners of Influence are individuals who have committed future dollars for future needs. These heroes who make a five-year investment are changing lives not only today, but also for the future needs of Laramie County.

Heroes of Action — \$10,000.00 or more

Doug and Susan Samuelson
Gregory C. Dyekman

Dr. Ron and Carol Waeckerlin
Dr. Jeffrey and Lynne Carlton

Heroes of the Heart — \$5,000.00 to \$9,999.00

Ken and Susan Dugas

Heroes of Success — \$1,000.00 to \$4,999.00

Spradley Barr Motors, Inc
Pete and Connie Cathcart
Mona Lee Pearl
Paul and Kathy Cathcart
Stephen and Christine Schmerge
Daniel and Gwen Perdue
Mike and Krista Williams
Joe and Chris McRady
Matthew and Brittany Ashby
Bob and Janet Peck
Kevin and Lisa Paintner

Janet M. Tilton
John E. Lynch
Robert and Brandee Dahill
Jim and Peggy Hearne
Pinnacle Cabinets
Kevin Boyce and Mary Throne
Lawrence and Jennifer Wolfe

Additional Partners of Influence

William and Traci Willingham
Ron and La Velle Van Voast
Dr. Fred and Keren Emerich
Vickie C. Albert
Michael and Lisa Geesey
Ashley and Doug Schulz
Phil and Gay Van Horn
Hunter Engineering Corp

Laramie County Abstract & Title
Co.
Kevin and Merri Burkett
Shari L. Bremer
Kevin C. Kisicki
David and Julie Cook
Jessica Barrett Speer
Sam's Auto Sales & Parts

2010 Donors — Women's Leadership Council

Arbonne International
Mary Brown
Paul and Kathy Cathcart
Jim and Brenda Creel
Jeffry and Jan Felton
Jacqueline Ferrall
Nicholas and Tiffany Healey
Rene R. Hinkle
Lori Millin
Denise G. Newell
Harry and Lucie Osborn
Peak Promotions, Inc.
Ted Williams and Ruth Rentzell-Williams
Pete and Connie Cathcart
Leslie Swidecki
Lynne C. Weidel



Government Employee Campaigns

State of Wyoming

The State of Wyoming Employees have once again been our largest employee campaign group, raising \$148,136.65 for the 2010 campaign. The employees of the State will continue to have a great impact on our community. The support of the State Employees is paramount to the success of the campaign. Thank you to all who have made a difference this year.

State of Wyoming Chair: Todd Parfitt & Laura Laughlin

State of Wyoming Agency	Coordinator	Award
Administration and Information	Cynthia Hayden	
Auditor's Office	Nancy Prince	Gold
Attorney General's Office	Justin Daraie & Andrew Kuhlmann	
Board of Certified Public Accountants	Pam Ivey	Gold
Board of Parole	Randi Losalu	Gold
Community College Commission	Lawrence Buchholtz	Silver
Department of Agriculture	Derek Grant	
Department of Audit	Valerie Owens	Bronze
Department of Corrections	Shelly Edwards	Gold
Department of Education	Ester White	
Department of Employment	Patti Merchant	Bronze
Department of Environmental Quality	Alan Edwards	Bronze
Department of Family Services	Sheryll Hubbard	
Department of Fire Prevention and Electrical Safety	Jerome King	Bronze
Department of Game and Fish	Judie Petersen	Bronze
Department of Health	Bob Crowther	Bronze
Department of Insurance	Amy Weiss	Bronze
Department of Revenue	Pam Glick	
Department of Workforce Services	Nicole Novotny Smith	Bronze
Engineer's Office	Loretta Branigan	Bronze
Governor's Office	JuDean Young	Gold
Lands and Investments	Donovan Alonzo & Lisa Reinhart	Silver
Legislative Service Office	Katherine Barrett-Sabern	
Military Department	Jamie Ciz	
Office of Administrative Hearings	Cindy Richmond	Silver
Office of Homeland Security	Deb Burton	
Parks and Cultural Resources	Justin Morris & Lori Reed	Bronze
Public Defender's Office	Anna Hutchinson	Bronze
Public Service Commission	Carrie Anderson-Kincaid	Bronze
Secretary of State	Mary Lou Theis	Gold
Supreme Court	Shawna Enyeart	Silver
Treasurer	Kathy Ramsey	Bronze
Water Development Commission	Margaret Haberkorn	Gold
Wyoming Business Council	Chava Case	Gold
Wyoming Retirement System	Meleny Cox	Bronze

Government Employee Campaigns

State of Wyoming

These Departments within WYDOT
(Wyoming Department of Transportation)
Also won awards for their contributions.

Chair: Todd Parfitt

Administration	Gold	Information Technology	
Aeronautics.	Bronze	Internal Review	Bronze
Bridge Program.	Bronze	Maintenance.	
Budget.		Management Services	Bronze
Construction	Bronze	Materials Test Lab.	
Contracts and Estimates	Gold	Mechanics.	
Driver Services	Silver	Motor Vehicle Services.	Bronze
Enterprise Technology	Gold	Office Services	
Equipment.		Planning	Silver
Facilities Maintenance		Public Affairs Office	Silver
Financial Services.	Gold	Quality/Customer Service	Gold
Fuel Tax Administration	Silver	Resident Engineers.	
Geology.	Silver	Right of Way	Bronze
Highway Development.	Gold	Strategic Performance Improvement.	Gold
Highway Patrol	Gold	Telecommunication	Silver
Highway Safety.	Bronze	Traffic	
Human Resources.	Bronze	Training Program	Gold

*“Life’s most persistent and urgent question is,
What are you doing for others?”
— Martin Luther King, Jr.*

Government Employee Campaigns

Laramie County School District #1

LCSD#1 was successful this year in raising \$58,800.69 for the 2010 campaign. School District employees see the needs of children and families every day and we thank them for their commitment to changing lives in so many ways!

Co-Chairs: Dawn Guffey, J.P. Denning, and Alice Hunter

Administration Offices	Coordinator.....	Award
Staff Development	Dawn Guffey	
School.....	Coordinator.....	Award
Afflerbach Elementary	Linda Carlson	
Alta Vista Elementary	Ricky Brundage	
Anderson Elementary.....	Lori Sauter & Cheryl Snigg	Bronze
Arp Elementary.....	Linda Billings and Virginia Howard	
Baggs Elementary.....	Elilabeth Bowler	Bronze
Bain Elementary	Terri Faas	Silver
Buffalo Ridge Elementary.....	John Broda	
Carey Junior High	Derede Darden and Lori Conatser	
Central High School	Andrea Tuttle	
Cole Elementary	Vicky Russell	Bronze
Davis Elementary	Connie Telander	Bronze
Deming and Miller Elementaries	Tony Crecelius	Bronze/Gold
Dildine Elementary.....	Debbie Mathews	Bronze
East High School.....	Mary Lucas	
Fairview and Lebhart Elementaries	Angela Kinsolving	
Freedom Elementary.....	Yolanda Vigil	
Gilchrist Elementary.....	Connie Norwood	Silver
Goins Elementary	Sara Hall	Bronze
Hebard Elementary.....	Carla Gregorio	
Henderson Elementary.....	Reva Lobatos	
Hobbs Elementary	Elizabeth Brady	
Jessup Elementary	Cindy Mossey	Gold
Johnson Junior High School.....	Roger Zwonitzer	
McCormick Junior High School	Kevin Cates	
Pioneer Park Elementary	Jeana Byrne	
Rossman Elementary	M. Darnell, R. McKenna, M. Courtney and T. Martinez	Bronze
Saddle Ridge Elementary.....	Becky Brandt	
South High School	Scott Noble and Michael Hamel	
Sunrise Elementary	Georgia Broyles	Bronze
Triumph High School	Tavis Rasnake	

Laramie County Community College

LCCC demonstrated a successful campaign year for 2010, with a total of \$12,163.00. Thank you to the Student Services offices for coordinating fundraising efforts.

Government Employee Campaigns

City of Cheyenne

The City of Cheyenne employees have again conducted a tremendous campaign, contributing \$40,027.18 to the 2010 campaign. Thank you to all the City employees who serve us every day and choose to give back too!

City of Cheyenne Co-Chairs: Kristi B. Anderson, Lynn DeVilbiss and
Todd Feezer

Department/Office	Coordinator	Awards
1% Construction	Lorraine V. Sanchez.....	Gold
Attorney's Office	Daniel E White.....	Silver
Board Of Public Utilities.....	Jeffrey J. Pecenka.....	Silver
Building and Development.....	Robin Werner.....	Gold
Civic Center.....	Vicki L. Wilkins.....	Gold
Clerk's Office	Kristi B. Anderson.....	Bronze
(Includes Risk, I.T., Parking and Special Projects)		
Engineering	Lorraine V. Sanchez.....	Gold
Facilities Maintenance.....	Moniet C. Flores.....	Bronze
Fire and Rescue.....	Jon M. Narva.....	Gold
Fleet Maintenance.....	Moniet Flores.....	None
Human Resources	Nancy J. Brumbaugh.....	Gold
Mayor's Office.....	Virginia N. Riley.....	Gold
Municipal Court.....	Margarete C. Yeager	
Parks and Recreation.....	Lisa R.Olson	
Planning	Nancy A. Olson.....	Gold
Police Department.....	Jeff R. Schulz.....	Bronze
Public Works	Moniet Flores.....	Gold
Sanitation and Landfill	Dennis L. Pino	
Street and Alley.....	Moniet C. Flores	
Traffic Engineering	Moniet C. Flores.....	Gold
Transit Program.....	Patricia Philo.....	Silver
Treasurer/Accounting.....	Marty L. Hartigan	
Youth Alternatives	Normajean Ayala.....	Gold

Laramie County

Laramie County employees raised a total of \$11,429.00 during the 2010 campaign. This amount is divided into three employee campaigns within Laramie County.

Chair: Heather Rudy

Campaign.....	Amount	Coordinator
Cheyenne-Laramie County Health Department.....	\$4,082.00	Sheri Zakis
Laramie County Employees.....	\$3,929.00	Heather Rudy
Laramie County Library.....	\$3,418.00	Venetta S. Cook

Making the Case of Accountability

UNITED WAY OF LARAMIE COUNTY
(a non-profit organization)
STATEMENTS OF FINANCIAL POSITION
DECEMBER 31, 2009 AND 2008

	<u>2009</u>	<u>2008</u>
ASSETS		
Current Assets:		
Cash and cash equivalents	\$ 328,915	\$ 291,588
Certificates of deposit	392,551	381,052
Campaign pledges receivable, net of allowance for doubtful accounts	518,174	582,648
Current portion of long-term pledges receivable	73,481	99,547
Accounts receivable	11,099	8,524
Prepaid expenses	2,491	3,490
Total Current Assets	<u>1,326,711</u>	<u>1,366,849</u>
Long-term pledges receivable, net of allowance for doubtful accounts	<u>125,056</u>	<u>62,145</u>
Fixed Assets:		
Equipment	36,349	36,349
Software	17,458	17,458
	<u>53,807</u>	<u>53,807</u>
Less: Accumulated depreciation	(45,143)	(41,250)
Total Fixed Assets	<u>8,664</u>	<u>12,557</u>
Total Assets	<u><u>\$ 1,460,431</u></u>	<u><u>\$ 1,441,551</u></u>
LIABILITIES AND NET ASSETS		
Current Liabilities:		
Accounts payable	\$ 30,210	\$ 42,323
Accrued expenses	751	3,345
Deferred revenue	10,500	10,500
Allocations payable to agencies	745,382	721,600
Total Current Liabilities	<u>786,843</u>	<u>777,768</u>
Net Assets:		
Unrestricted		
Undesignated	475,051	432,020
Board designated	-	70,072
Total unrestricted	<u>475,051</u>	<u>502,092</u>
Temporarily restricted	198,537	161,691
Total Net Assets	<u>673,588</u>	<u>663,783</u>
Total Liabilities and Net Assets	<u><u>\$ 1,460,431</u></u>	<u><u>\$ 1,441,551</u></u>

Making the Case for Accountability

Trust and confidence are essential for United Way and all charities. It is important that all donors are informed and aware of the many aspects of their charitable giving. To that end, United Way of Laramie County is aware that it is our responsibility to review and communicate our accountability standards.

United Way of Laramie County is Accountable

- The United Way of Laramie County Board of Directors has put into place policies and procedures to ensure your dollars are carefully accounted for and spent wisely.
- United Way Community Investment Process: It is local volunteers who decide which local programs and collaborations should be funded. Each year approximately 38 volunteers review each agency applying and decide how the United Way dollars are best spent. For more detailed information about the process, please contact United Way of Laramie County at 307.638.8904.
- All outgoing checks and payments require two Board Member signatures.
- The Board of Directors reviews financial statements on a monthly basis.
- The Finance Committee completes a detailed review of the accounts receivable, budgets and investments quarterly, noting payments made and year-to-date budget performance.
- United Way of Laramie County completes a yearly audit by a reputable accounting firm. The audit has never reported any concerns or qualifications.
- The Audit and Financials for United Way of Laramie County are available to the public for review upon request. Please make an appointment with the office.
- The Board of Directors approves the formation and implements the yearly budget.
- United Way of Laramie County finds sponsors and underwriters to cover the cost of yearly special events and advertising to decrease administrative costs.
- A performance review is conducted for each staff member on an annual basis.

United Way Worldwide is Accountable

- United Way of Laramie County is an affiliate of United Way Worldwide. As an affiliate, United Way of Laramie County paid annual dues of approximately \$12,500.00 for the 2010 calendar year. For these dues we receive use of United Way's name, national advertising, national relationships with major corporations, marketing guidance and research, staff training and other support functions.
- Since the 2002 United Way campaign, United Way Worldwide has adopted new accountability standards required for membership. Specifically, the enhanced standards require that include:
 - All members agree to participate in, and submit to United Way Worldwide a community-driven self-assessment of their community impact work, financial management, decision-making and organizational governance.
 - All local United Way's agree to report full revenue and expense data to United Way Worldwide for third party review.

Connie Sloan Cathcart Executive Director

*I am only one,
But still I am one.
I cannot do everything,
But still I can do something;
And because I cannot do everything,
I will not refuse to do the something I can do.*
—Edward Everett Hale

With gratitude,



Connie Sloan Cathcart



2010 United Way of Laramie County Staff



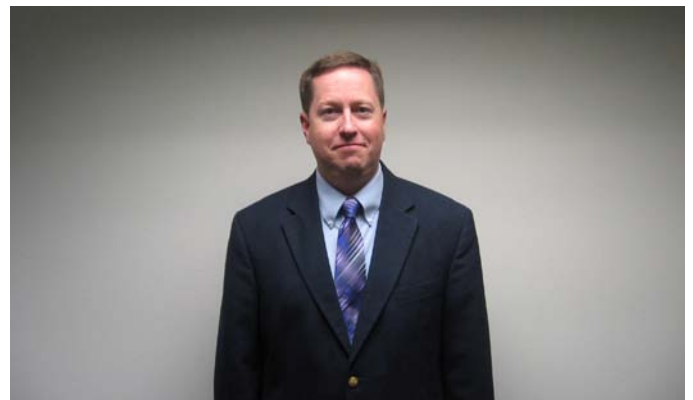
Community Programs Coordinator
Rod Hottle



Office Manager Debby Phillips



Data Specialist Sarah Napier



Resource Development Director
Christopher W. Allen

2010
The year in review



The 2010 Car Voucher CASH Winner:
Cory Jilek of Spradley Motors



Gov. Matt Mead makes his pledge at the 2010
Thank You Luncheon.



Executive Director Connie Sloan Cathcart and
Resource Development Director Chris Allen at
the Connections Corner Press Conference



The Boys & Girls Club say Thank You to United
Way.



Mayor Kaysen at the 2-1-1 Grand Opening



Tim and Kathy Joannides meet with Cheyenne Health and Wellness Board Member Sue Schraffenberger at the December press conference.



Multiple guests await the start of the 2010 December press conference.