

# 2019 ANNUAL REPORT

**WE ARE MORE THAN FUNDRAISERS**

**WE ARE THE HAND RAISERS**

**THE GAME CHANGERS**

# TABLE OF CONTENTS

A LETTER FROM LEADERSHIP	— — — — — — —	1
WHO WE ARE	— — — — — — —	2
OUR CHARGE	— — — — — — —	3
EDUCATION	— — — — — — —	4
HEALTH	— — — — — — —	6
FINANCIAL STABILITY	— — — — — — —	8
2020 PROGRAM PARTNERS	— — — — — — —	10
INITIATIVES	— — — — — — —	11
VITA	— — — — — — —	12
COMMUNITY SCHOOLS	— — — — — — —	13
CORPORATE SPONSORS	— — — — — — —	14
BUSINESS PARTNERS	— — — — — — —	15
COMMUNITY INVESTMENT REVIEW PANEL	— — — — — — —	16
LEADERSHIP DONORS	— — — — — — —	17
EMPLOYEE CAMPAIGNS	— — — — — — —	18
VOUCHER PROGRAM	— — — — — — —	19
BOARD OF DIRECTORS	— — — — — — —	20
CAMPAIGN CO-CHAIRS	— — — — — — —	21
FINANCIALS	— — — — — — —	22

# A LETTER FROM LEADERSHIP

To Our Beloved Community,

Thank you for your generous support of United Way of Laramie County. Without you, our loyal donors and dedicated volunteers, United Way of Laramie County simply does not exist. Your investments of time and contributions result in us working together to improve the lives of people in our community. Collectively, we fight for the education, financial stability and health of all in Laramie County

While the national giving statistics were flat, our campaign was down 16%. As your director, facing this has been difficult. I assure you that our Board and Staff take this very seriously and are committed to making bold plays to turn this trend.

It is important to note-we need not start over. We need to examine ourselves and map out our path forward, celebrating our past achievements and leveraging what is working well, leaving behind what isn't, and embracing shared opportunities.

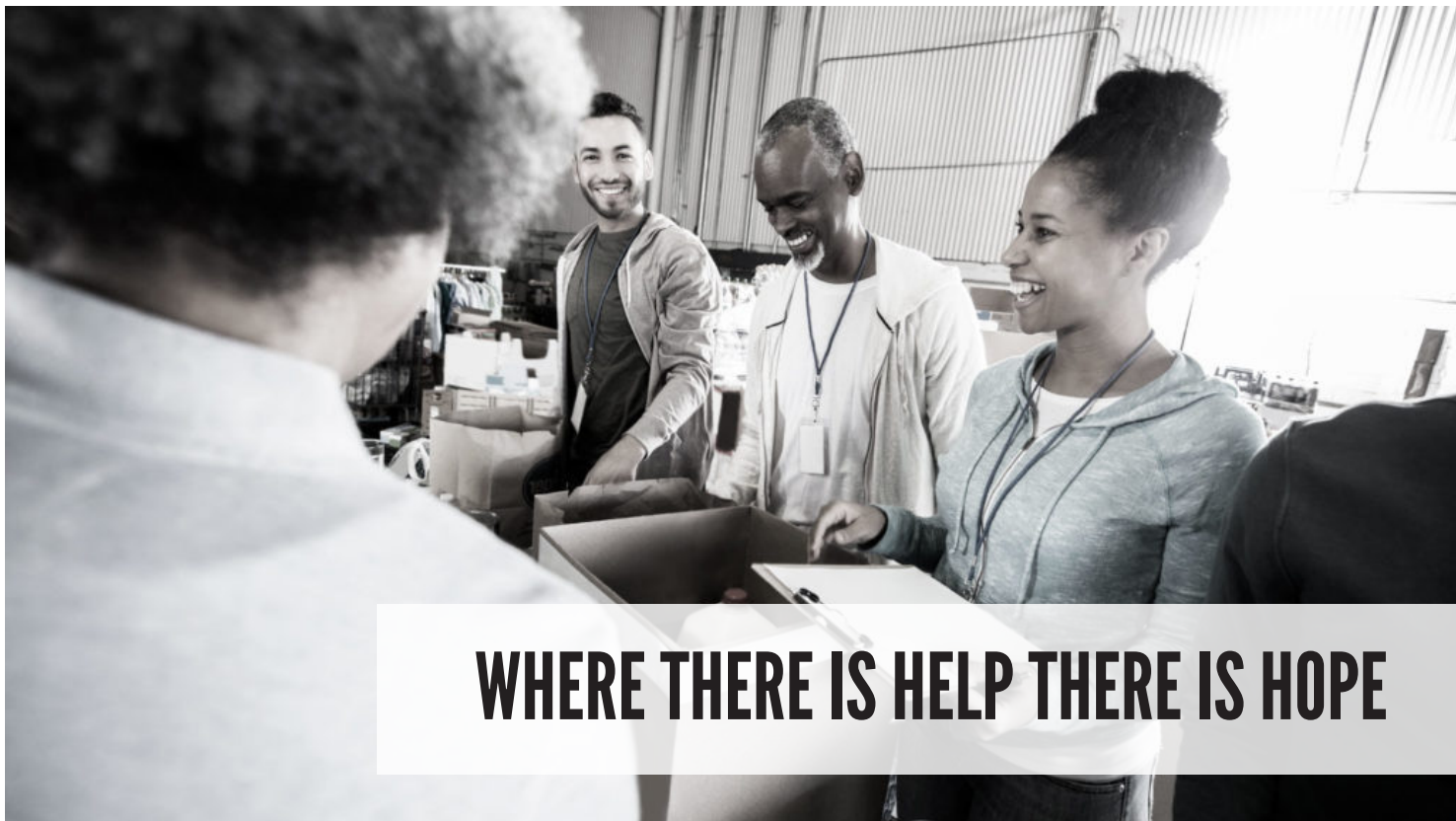
Our intentions set the stage for achieving all our goals. Your good intentions connect us all together with generosity, compassion, expectations and hope. We challenge you, we challenge each other, to renew our commitment to our community and to each other.

Honored to be at your service,



A handwritten signature in black ink that reads "Connie Sloan Cathcart". The signature is fluid and cursive.

Connie Sloan Cathcart  
Executive Director  
United Way of Laramie County



## WHERE THERE IS HELP THERE IS HOPE

United Way fights for the health, education and financial stability of every person in every community.

We win by living United. By forging unlikely partnerships. By finding new solutions to old problems. By mobilizing the best resources. And by inspiring individuals to join the fight against their community's most daunting social crises.

We are more than fundraisers. We are hand-raisers. Game-changers. When we Live United, we take on challenges and tackle problems. Problems others shy away from.

# OUR CHARGE

**W**e strive to be a symbol of hope, an agent for change, a leader, a convener, and an organization working to improve the quality of life for everyone in our community. We envision a community where all individuals and families have the opportunity to achieve their full potential, and that fosters hope and opportunity for everyone;

**W**here all youth live in a safe environment and prepare to succeed in school and life;

**W**here our neighbors in crisis receive resources and tools to begin productive livelihoods and become stronger families;

**W**here everyone receives effective health care that improves the quality of life;

**W**here our community sets significant and measurable goals to advance and achieve these fundamental building blocks of human development.

**W**e know that community we envision can be possible, and United, we work toward supporting the local programs who can help make it happen.

---

The mission of United Way of Laramie County is to responsibly mobilize and leverage community resources to create long-term changes that produce healthy, educated and financially stable individuals and families in Laramie County.



# EDUCATION

We ensure that children get a strong start in life by helping them achieve crucial developmental milestones and start school ready to succeed. We connect young people with the tools knowledge and networks they need to graduate high school and thrive in the job market.

# HOMESCHOOLING IS EASIER WHEN YOU ACTUALLY HAVE A HOME.

We ensure children and youth learn and grow by helping them achieve crucial developmental milestones, graduate high school on time and thrive in the job market.



697

CHILDREN PARTICIPATING IN AFTER SCHOOL PROGRAMS  
PARTICIPATED IN CHARACTER AND LEADERSHIP  
PROGRAMS



69

YOUNG PEOPLE IN HOME BUILDING PROGRAMS WILL  
DEMONSTRATE A MEASURABLE INTEREST IN CAREERS IN  
THE CONSTRUCTION TRADES



29

FAMILIES WERE PROVIDED WITH EDUCATIONAL  
RESOURCES AND TRAINING



293

CHILDREN PARTICIPATING IN AFTER SCHOOL  
PROGRAMS ACCOMPLISH THEIR HOMEWORK  
REGULARLY



147

INDIVIDUALS ATTENDED A PARENT ENGAGEMENT  
OPPORTUNITY THROUGH COMMUNITY SCHOOLS

United Way fights for the health, education and financial stability of every person in Laramie County. We have one life. To live better, we must LIVE UNITED®.

**LIVE UNITED**



**United Way  
of Laramie County**





# HEALTH

Good health is fundamental to people's capacity to enjoy their lives, to provide for their families, to realize their dreams and to contribute to society. We fight to connect people with affordable healthcare, healthy foods and physical fitness so everyone can live healthy and happy lives.



# BECAUSE EVERYONE DESERVES TO BE HEALTHY.

We expand access to affordable healthcare, healthy food and opportunities for physical activity, so that everyone can lead happy and successful lives.



**460**

**ELDERLY INDIVIDUALS REMAINED IN THEIR OWN HOME  
DUE TO HEALTHY HOME DELIVERED MEALS**



**3223**

**PATIENTS BECAME MORE ENGAGED IN THEIR OWN  
HEALTHCARE**



**928**

**PEOPLE RECEIVED TIMELY EMERGENCY MENTAL HEALTH  
STABILIZATION**



**836**

**PATIENTS WITH HYPERTENSION HAD  
IMPROVED HEALTH THROUGH REGULAR  
MONITORING**



**31**

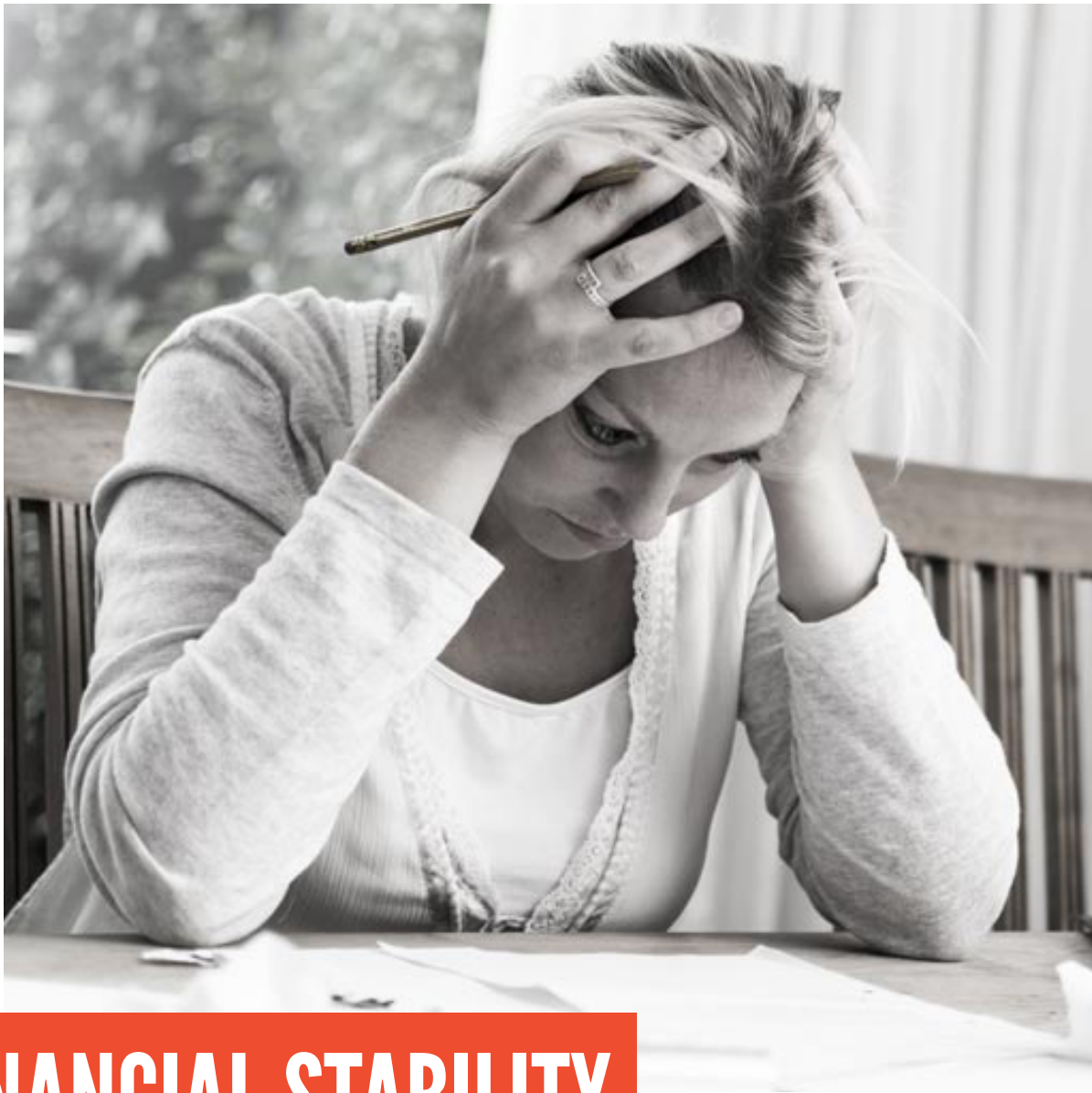
**PARTICIPANTS RECEIVING RECOVERY COACHING INCREASED  
THEIR DAYS ABSTINENT FROM DRUGS/ALCOHOL**

United Way fights for the health, education and financial stability of every person in Laramie County. We have one life. To live better, we must LIVE UNITED®.

**LIVE UNITED**



**United Way  
of Laramie County**



# FINANCIAL STABILITY

We're fighting to ensure that every person in our community has the resources and opportunities they need to build a stronger financial foundation for themselves and their families.

# UNITED WE TURN JOBS INTO CAREERS.

We give people the education, resources and opportunities they need to improve their lives and the lives of their children — because a better future begins with financial stability.



2

FAMILIES TOOK OWNERSHIP OF HOMES BUILT BY  
VOLUNTEERS



27

WOMEN THAT GRADUATED FROM SKILLS DEVELOPMENT  
PROGRAM WERE EMPLOYED FULL TIME WITH LIVEABLE  
WAGES



6

FAMILIES COMPLETED A 12-WEEK FINANCIAL  
LITERACY CLASS



\$1.2 MILLION

PUT BACK IN THE HANDS OF LARAMIE COUNTY  
RESIDENTS THROUGH OUR TAX SUPPORT SERVICES



114

INDIVIDUALS REDUCED THEIR DEBT THROUGH A FINANCIAL  
SUPPORT PROGRAM

United Way fights for the health, education and financial stability of every person in Laramie County. We have one life. To live better, we must LIVE UNITED®.

**LIVE UNITED**



**United Way  
of Laramie County**

# 2019 PROGRAM PARTNERS



## EDUCATION

After School for Kids (ASK)  
Boys & Girls Club of Cheyenne  
Funding the Future  
Habitat for Humanity  
Safe Harbor, A Children's Justice Center  
Southeast Wyoming Foster Grandparents  
Special Friends of Cheyenne



## FINANCIAL STABILITY

American Red Cross of Wyoming  
Bethel Outreach Ministries  
CASA of Laramie County  
CLIMB Wyoming  
Family Promise of Cheyenne  
GreenPath Inc.  
Kinship Support Services  
My Front Door  
NEEDS Inc.  
Safehouse Services  
Southeast Wyoming Foster Grandparents  
Southern Wyoming RSVP  
The Salvation Army  
Wyoming 2-1-1  
Wyoming Senior Companions



## HEALTH

COMEA Inc.  
HealthWorks  
Meals on Wheels of Cheyenne  
Peak Wellness  
Recover Wyoming

# INITIATIVES

## **Wyoming Free Tax Service**

---

Wyoming Free Tax Service is designed to help hardworking families who earn \$65,000 or less annually with free tax preparation. This program is operated by certified volunteers and allows our neighbors the opportunity to file and direct deposit their tax refund for free and ensure proper tax credits are utilized. We provide two different ways to have your taxes prepared for free – either at our Free Tax Service sites or online through [MyFreeTaxes.com](https://MyFreeTaxes.com).

## **Volunteer Income Tax Assistance (VITA)**

---

The Volunteer Income Tax Assistance (VITA) sites are where an IRS certified volunteer will help prepare your taxes and see what credits you may qualify for. Wyoming Free Tax Service, Laramie County Community College, AARP and United Way of Laramie County provide this service.

## **Goal Connect**

---

This software system fosters collaboration across a full range of human service and health care providers throughout Laramie County.

# VITA

The Volunteer Income Tax Assistance (VITA) sites are where an IRS certified volunteer will help prepare your taxes and see what credits you may qualify for. Wyoming Free Tax Service, Laramie County Community College, AARP and United Way of Laramie County provide this service.

---

**VOLUNTEERS**

**17**

**VOLUNTEER HOURS**

**1,205**

**FEDERAL RETURNS FILED**

**780**

**STATE RETURNS FILED**

**59**

**TOTAL REFUNDS**

**\$1,200,996**

# COMMUNITY SCHOOLS



## ORGANIZING COMMUNITY RESOURCES AROUND STUDENT SUCCESS

With a vision that all students come to school ready to learn, Community Schools is a strategy for organizing community resources around student success. Started in 2017 at Cole and Hebard Elementary School, this United Way of Laramie County Initiative thus far has collaborated with over 50 different organizations to provide services to the families and students of both schools.



# CORPORATE SPONSORS



WyomingTribuneEagle



US Bank  
Jonah Bank of Wyoming  
McGee Hearne & Paiz, LLP  
Pinnacle Bank  
Reiman Corp  
Western States Bank

Swire Coca-Cola  
Blue Cross Blue Shield of Wyoming  
WYHY Federal Credit Union  
Dyno Nobel  
Cheyenne State Bank  
Ayres Associates

# BUSINESS PARTNERS

Woodhouse, Roden, Nethercott LLC  
Crete Carrier Corporation  
Kadrms, Lee, & Jackson, Inc.  
National Property Inspections  
Presidential Roofing  
Cheyenne Family Dental Center  
Life Care Center of Cheyenne  
Rocky Mountain Power Foundation  
Pfylum (Unicover) Corporation  
King Soopers  
Lummis Livestock Company LLC  
Orrison Distributing, LTD  
Town & Country Supermarket Liquor  
A. G. Andrikopoulos Resources, Inc.  
Blue Ribbon BBQ Food Truck  
Butler Dogs  
Capitol Tours & Travel, Inc  
Century 21 - Bell Real Estate  
Christine Kronz Photography, LLC  
D.T.'s Package Liquors & Fine Wines  
Four Corners Siding, LLC  
Frontier Veterinary Clinic  
Halley & Murray, LLC  
High Country Healthwatch, LLC  
Jeremy Hamilton, Realtor, #1 Properties  
Miller Promotions

Preferred Management, LLC  
RLR, LLP  
The Daily Press  
The Nipa Hut  
WG Dale Electric  
Yummy Bunny Ice Cream  
McGee, Hearne & Paiz  
Wyoming Machinery Company  
Black Hills Energy  
ANB Bank  
First Interstate Bank  
First State Bank  
US Bank  
Wallick & Volk  
Taco John's International  
Blue Cross/Blue Shield Of Wyoming  
Dillard's  
Spradley Barr Motors, Inc  
Central Bank & Trust  
Cheyenne State Bank  
Jonah Bank of Wyoming  
RBC Wealth Management  
Schreiner, Weskamp, and Schmerge LLC  
Western States Bank  
WyHy Federal Credit Union  
Wyoming Bank and Trust



# COMMUNITY INVESTMENT REVIEW PANEL

Community Investment Review Panel volunteers play a critical role in deciding how funds raised by United Way of Laramie County are used to meet prioritized health and human service needs in our community. Review Panel volunteers are responsible for making funding recommendations that are forwarded to the United Way Board of Directors for final deliberation and approval.



## EDUCATION

Amber Still  
Ann Seacrest  
Mary Brown  
Robin Cooley  
Sue Garrett  
Kris Rude

## FINANCIAL STABILITY

Mary Augustin  
Val Cirbo  
Barb Stafford  
Gay Woodhouse

## HEALTH

Shari Bremer  
Shelly Hood  
Elizabeth Thorson

# LEADERSHIP DONORS

Kay Lynn Bestol  
Neil and Kay Emmons  
Jim and Estelle Haefele  
Rich and Mary Ann Hillman  
Bradley and Jean Oberg  
Edward and Nancy Prosser  
Ruth Rentzell-Williams  
Beth Schieck  
Mona L. Pearl  
Kevin Boyce and Mary Throne  
Mr. Casey Turcato  
Jeff and Beth Allen  
Aaron and Michelle Courtney  
Raymond Scott and Kristin Cavallier  
Charles and Ricki Thompson  
John E. Lynch  
Kevin and Shawndae Ogle  
William and Susan Keenan  
Brendelyn Merritt  
Gerald and Kathleen Carlson  
Keith and Lynn Cashman  
Tim and Tricia Crilly  
Michael and Marybeth Finn  
Ms. Jacque Georgio  
Jeffery and Diane Gore  
George C. Helzer  
Robert J. Karisny  
Robert and Mary Lampert  
Mark McKay  
Rita C. Meyer  
Ms. Denise Newell  
Kevin and Lisa Paintner  
Sara and Bryan Pedersen  
Tucker Stover  
Stephanie Teubner  
Larry and Patty Walters  
Steven and Jaime Winchell  
Lawrence and Jennifer Wolfe  
Dustin and Christina Woodhouse  
Greg and Judy Wooden  
Linda Glass  
Bob Hansen  
Mr. & Mrs. Marty and Nancy Knaub  
Gary and Mary Cox  
Carol Dowdy  
Jessica M. Downs  
Robert and Jill Jensen  
Jacklyn M. Norviel  
Brian and Kim Lovett  
Robert and Brandee Dahill  
Bob and Brenda Elliott  
Russell and Lisa Hay

Wayne and Shelley Herr  
Darrell and Jane Moran  
Ronald and Patricia Nimmo  
Amber Nuse  
Gregory and Lindsay Vaughn  
William W. Anderson  
Joseph Marek  
Michael and Pamela Wallace  
Dr. Rod and Sue Anderson  
Mark Falk  
Theodore K. Harris  
Vince Meyer  
Stephen and Christine Schmerge  
Pat and Renee Ashworth  
James and Sunny Kaste  
Dr. Carol and Dr. Phil Schiel  
Dr. Kirk Shamley  
Douglas Shope  
Jay A. Jerde  
Margaret E. Smith  
John and Pamela Winter  
Robert and Julie Tiedeken  
Gregg and Dorrie Jones  
Dr. Joseph and Carol Horam  
Conn and Aimee Lewis  
Rich and Michele Bolkovatz  
Jim and Brenda Creel  
Carl and Wilma Lathrop  
Mr. & Mrs. Matthew Ashby  
Paul and Kathy Cathcart  
Mike Williams  
Stephen and Brandy Marrou  
Steven Carver  
Eggers Family  
Dennis and Sandra Wallace  
Jeff and Diana Wallace  
Gay Woodhouse  
Jeffrey and Kristine Rude  
Dr. Larry and Vicki Meuli  
Mark and Linda Young  
James D. and Heidi Casey  
Timothy and Kathy Joannides  
Rhonda Sigrist Woodard & George J. Kallas  
Alan and Lindi Kirkbride  
Mike Shonsey  
Mr and Mrs Ken Dugas  
Dr. Jeffrey and Lynne Carlto  
Paul and Beth Howard  
Doug and Susan Samuelson  
Sandra K. Surbrugg & Robert Prentice  
Gregory C. Dyekman  
Harry and Shirley Kembel

# EMPLOYEE CAMPAIGNS

Aetna Foundation, Inc.  
ALIGN  
Allstate Insurance  
ANB Bank  
Ayres Associates  
Black Hills Energy  
Blue Cross/Blue Shield Of Wyoming  
Blue Federal Credit Union  
Boys & Girls Club of Cheyenne  
CenturyLink  
Cheyenne LEADS  
Cheyenne Skin Clinic  
Cheyenne State Bank  
Crete Carrier Corporation  
CRMC-Cheyenne Regional Medical Center  
Exelon Corporation  
Express Employment  
First State Bank  
Habitat for Humanity of Laramie County, Inc.  
Halladay Motors  
HealthWorks  
Holland & Hart LLP  
JC Penney - #2058  
Jonah Bank of Wyoming  
King Soopers  
Laramie County Government - Parent Firm  
Laramie County Library  
LCSD#1  
McGee, Hearne & Paiz  
Meridian Trust FCU  
Nationwide Insurance  
Needs, Inc  
O'Reilly Auto Parts  
PacifiCorp  
Peak Wellness Center  
Personal Financial Solutions, Inc.  
RBC Wealth Management  
Reiman Corp  
Safehouse Sexual Abuse Services  
Schreiner, Weskamp, and Schmerge LLC  
Spradley Barr Motors, Inc  
State-Attorney General's Office

State-Auditor's Office  
State-Board of Engineers  
State-Board of Medicine  
State-Construction Dept, School Facilities Division  
State-Dept of Audit  
State-Dept of Corrections  
State-Dept of Education  
State-Dept of Environmental Quality  
State-Dept of Family Services  
State-Dept of Game and Fish  
State-Dept of Health  
State-Dept of Insurance  
State-Dept of Revenue  
State-Dept of Workforce Services  
State-Fire Prevention & Electrical Safety  
State-Lands & Investments  
State-Military Department  
State-Office of Administrative Hearings  
State-Office of Homeland Security  
State-Office of Tourism  
State-Parks & Cultural Resources  
State-Public Service Commission  
State-Retirement System  
State-Secretary of State  
State-Supreme Court  
State-Water Development Commission  
State-Wyoming Business Council  
Taco John's International  
Target Store of Cheyenne  
Union Pacific Corporation  
United Parcel Service  
US Bank  
Wallick & Volk  
Wells Fargo  
Western States Bank  
Western Vista Federal Credit Union  
WYDOT  
WyHy Federal Credit Union  
Wyoming Machinery Company  
Wyoming Tribune Eagle  
Xcel Energy



# CAR VOUCHER

Thanks to our generous sponsors; Halladay Motors, Kia of Cheyenne, and Spradley Barr Cheyenne, we had a \$15,000 voucher for a donor to use towards a purchase of a vehicle.

## To be eligible for the drawings;

A pledge of \$180 or more gave donors one entry into the drawing of their choice.

A pledge of \$420 or more gave donors two entries into the drawing(s) of their choice.

A pledge of \$600 or more gave donors three entries into the drawing(s) of their choice.

A pledge of \$1,200 or more gave donors four entries into the drawing(s) of their choice.

Only four entries per donor are permitted in each year's drawings.



## OFFICERS

**Brittany Ashby**  
Align

**Mark Young**  
State Fire Prevention

**Joseph Horam**  
Blue Cross Blue Shield

**Lyndsay Orr**  
Wyoming Business Council

## DIRECTORS

**Renee Ashworth**  
Express Employment

**Pat Ashworth**  
Express Employment

**Gay Woodhouse**  
Woodhouse Roden Nethercott, LLC

**Michele Bolkovatz**  
Blue Federal Credit Union

**Rachelle Zimmerman**  
Cheyenne LEADS

**Sam Runyan**  
Charles Schwab

**Casey Turcato**  
Simon

**Robin Rolling**  
Cheyenne Regional Medical Center

**Misha Westby**  
State Attorney General's Office

## 2019 CO-CAMPAIGN CHAIRS

**Aaron Courtney**  
Jonah Bank

**Lindi Kirkbride**  
Harding Kirkbride Livestock

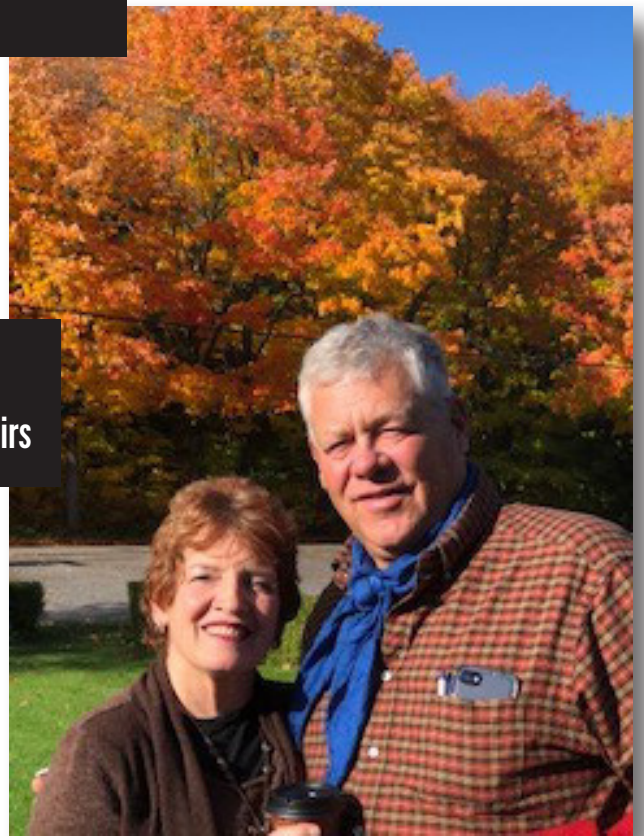
**Shelly Courtney**  
LCSD#1

**Alan Kirkbride**  
Harding Kirkbride Livestock



# UWLC CAMPAIGN CO-CHAIRS

**The Kirkbride Family**  
2019/2020 Campaign Co-Chairs



“ **I**n our efforts to help Laramie County become a desirable community for a diverse group of people, we believe a key element is a strong and supported United Way. Our Program Partners serve our community in many capacities that help Laramie County, especially in the areas of Financial Stability, Education, and Health.

With the success of the annual United Way Campaign, our community is able to continue to meet these needs and eventually reduce them. ”

**- The Courtney Family**  
2018/2019 Campaign Co-Chairs

# FINANCIALS

Financial transparency and the health of our organization is of great importance to us. Our financial snapshot helps raise community awareness towards our mission to responsibly mobilize and leverage community resources to create long-term changes that produce healthy, educated and financially stable individuals and families in Laramie County.

## ASSETS

Cash and cash equivalents	\$646,779.00
Certificate of deposits	\$280,492.00
Other receivables	\$6,279.00
Pledges receivable, net	\$376,260.00
Prepaid expenses	\$3,305.00
Security deposit	\$2,748.00
Cash surrender value of life insurance	\$49,270.00
Donated rent receivable, net of discounts	\$53,743.00
Property and equipment, net of accumulated depreciation	\$126,658.00
<b>TOTAL ASSETS</b>	<b>\$1,545,534.00</b>

## LIABILITIES

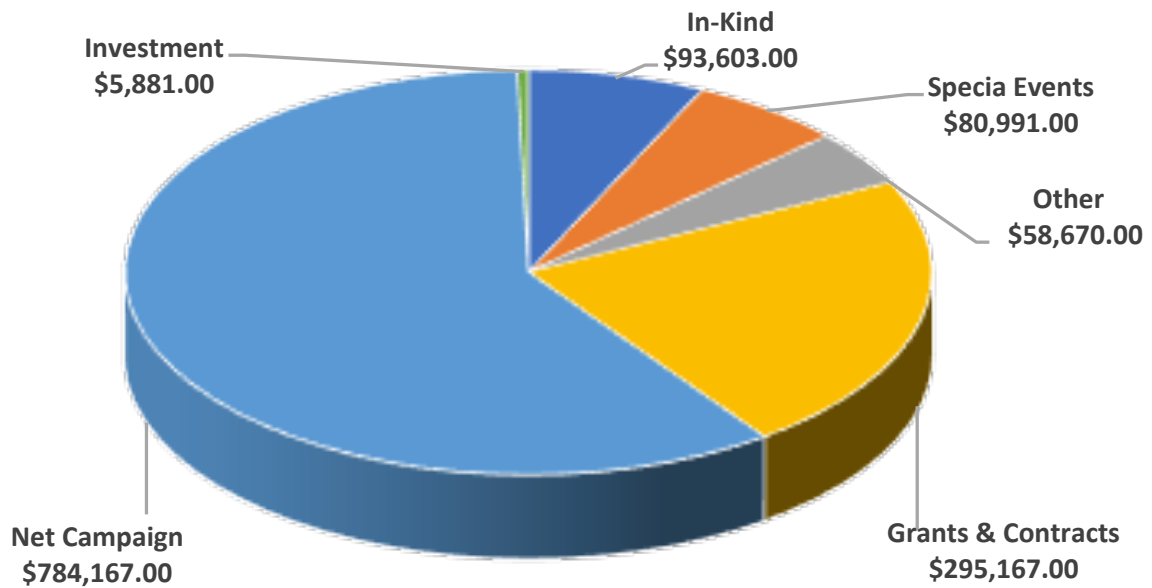
Accounts Payable	\$26,943.00
Designations and distributions payable	\$817,942.00
Deferred revenue	\$221,583.00
Accrued expenses	\$50,105.00
<b>TOTAL LIABILITIES</b>	<b>\$1,116,573.00</b>

## NET ASSETS

Unrestricted net assets	\$424,174.00
Temporarily restricted	\$4,787.00
<b>TOTAL NET ASSETS</b>	<b>\$428,961.00</b>

<b>TOTAL LIABILITIES AND NET ASSETS</b>	<b>\$1,545,534.00</b>
---	-----------------------

## REVENUE SOURCES 2018



## SUPPLEMENTAL SCHEDULE OF EXPENSES 2018

Expenses excluding in-kind and annual sponsorships

Return to Community (Agency Partners) \$1,115,369.00

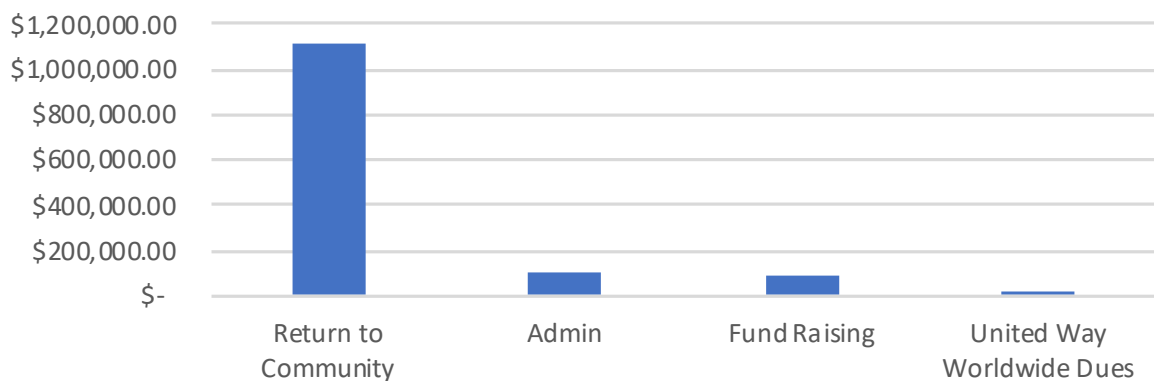
Organizational/Administrative \$100,867.00

Fund Raising \$87,001.00

United Way Worldwide Dues \$11,318.00

**TOTAL EXPENSES: \$1,314,555.00**

## Expenses



# LIVE UNITED



**United Way  
of Laramie County**

1007 E Lincolnway  
Cheyenne WY 82001  
307.638.8904

[www.unitedwayoflaramiecounty.org](http://www.unitedwayoflaramiecounty.org)

